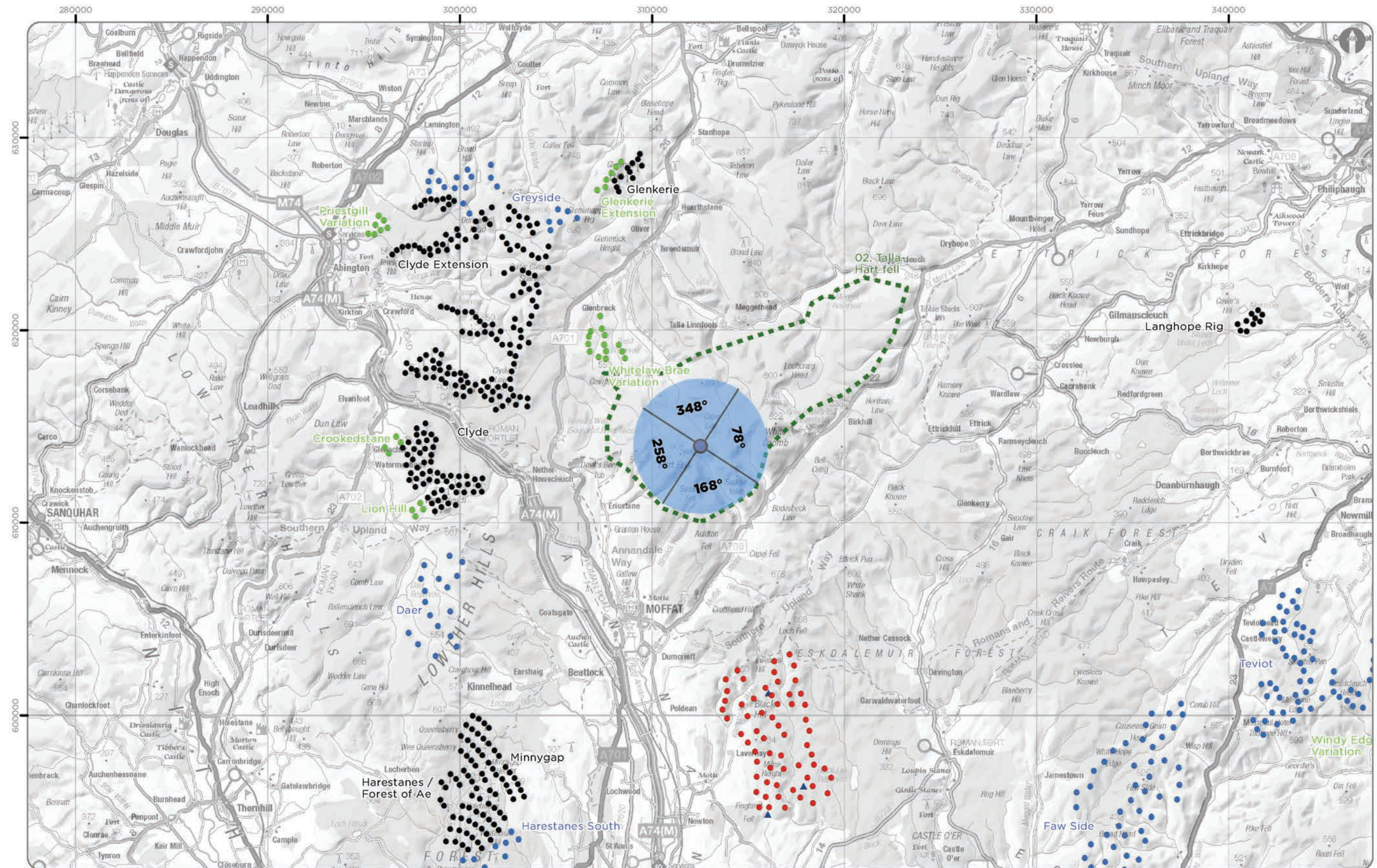


April 2023

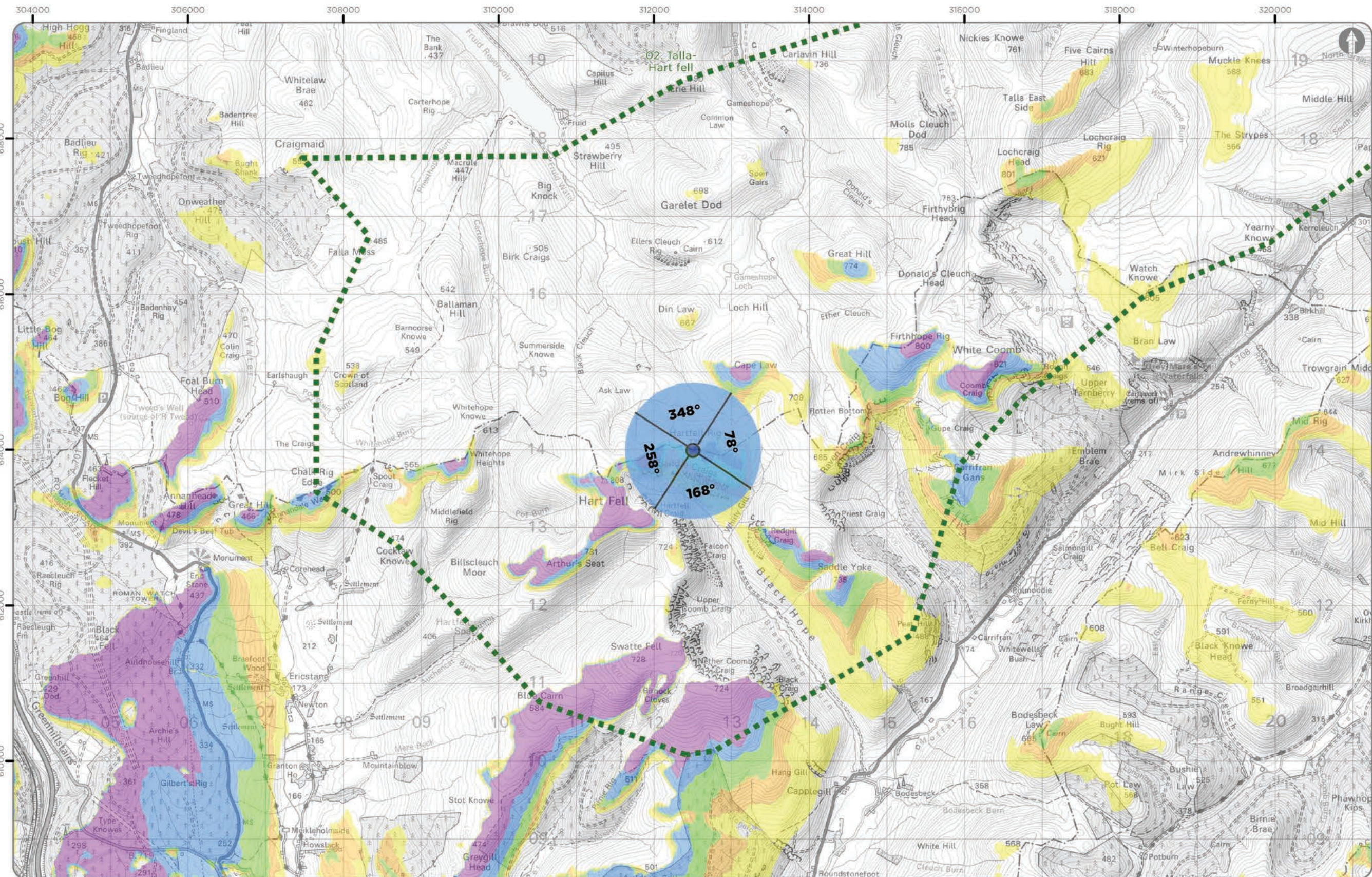
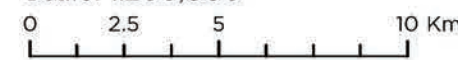
Additional Information

WLA Viewpoints

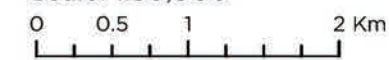
Scoop Hill Community Wind Farm



Viewpoint Location Plan Baseline Panorama (90 Degree View)
Scale: 1:200,000



Viewpoint Location Plan (53.5 Degree View)
Scale: 1:50,000



Note:

1. ZTV: Created using ESRI ArcGIS 10.8.2 software using the following data and parameters:

- Blade tip height: 180 / 200 / 225 / 250m
- DTM data: OS Terrain 5 and OS Terrain 50 DTM resampled to 10m.
- Observer height: 2m
- No surface features, such as buildings or trees, were included in the analysis.
- Earth curvature and light refraction have been included in the calculations.

2. © Crown copyright and database rights 2022 Ordnance Survey 0100031673.

Legend

- Proposed Turbine Location
- Proposed Met Mast Location
- Wild Land Area

Cumulative Wind Farm Status:

(November 2022)

- Operational
- Consented
- Appeal / Application

Blade Tip Zone of Theoretical Visibility

No. of Theoretically Visible Turbines

- 1 - 12
- 13 - 24
- 25 - 36
- 37 - 48
- 49 - 60

Viewpoint:

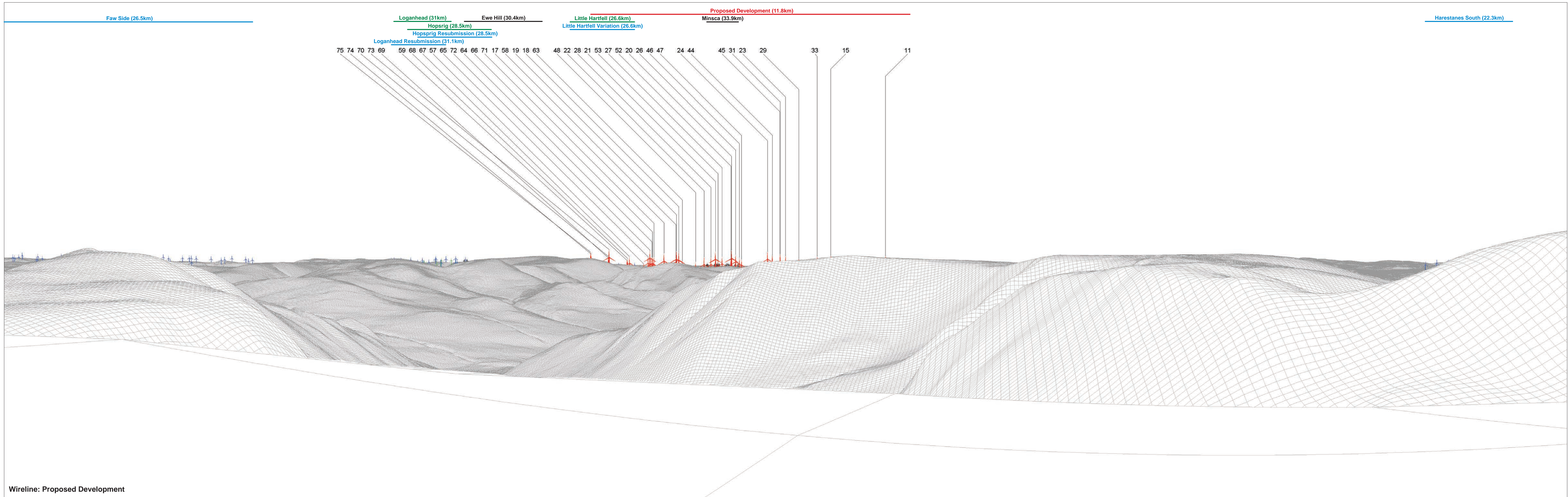
- 90 Degree Field of View

SCOOP HILL COMMUNITY WIND FARM - ADDITIONAL INFORMATION

AI WLA Figure A1a
WLA Viewpoint 1: Hartfell Rig

Ref No: 160971	Created By: LA	Rev No: 1
	Drawing Size: A3	Date: 14/12/2022

Coordinate System: BNG OS GB 1936 Datum



Wireline: Proposed Development

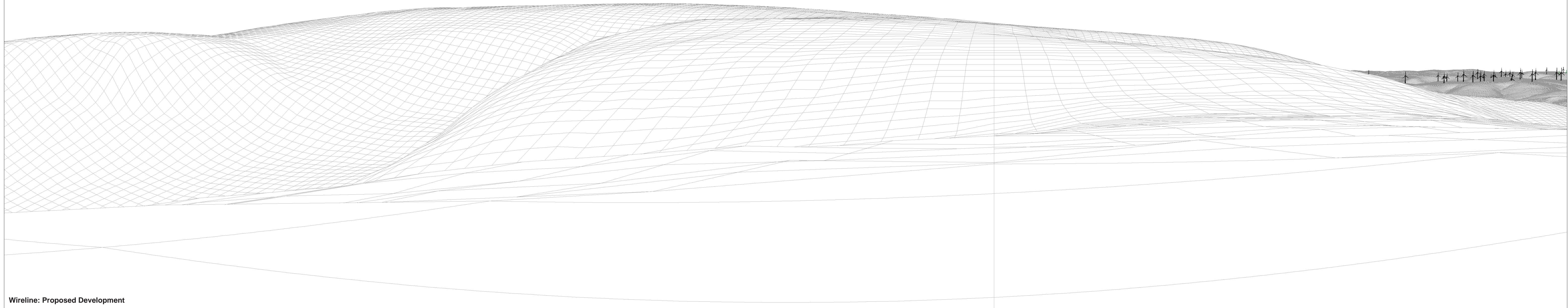
OS reference: 312498 E 613990 N
 Eye level: 739.4 mAOD
 Direction of view: 168°
 Nearest turbine: 11.78 km

Horizontal field of view: 90° (cylindrical projection)
 Principal distance: 522 mm
 Paper size: 841 x 297 mm (half A1)
 Correct printed image size: 820 x 260 mm

Clyde (9.2km)

Clyde Extension (10.4km)

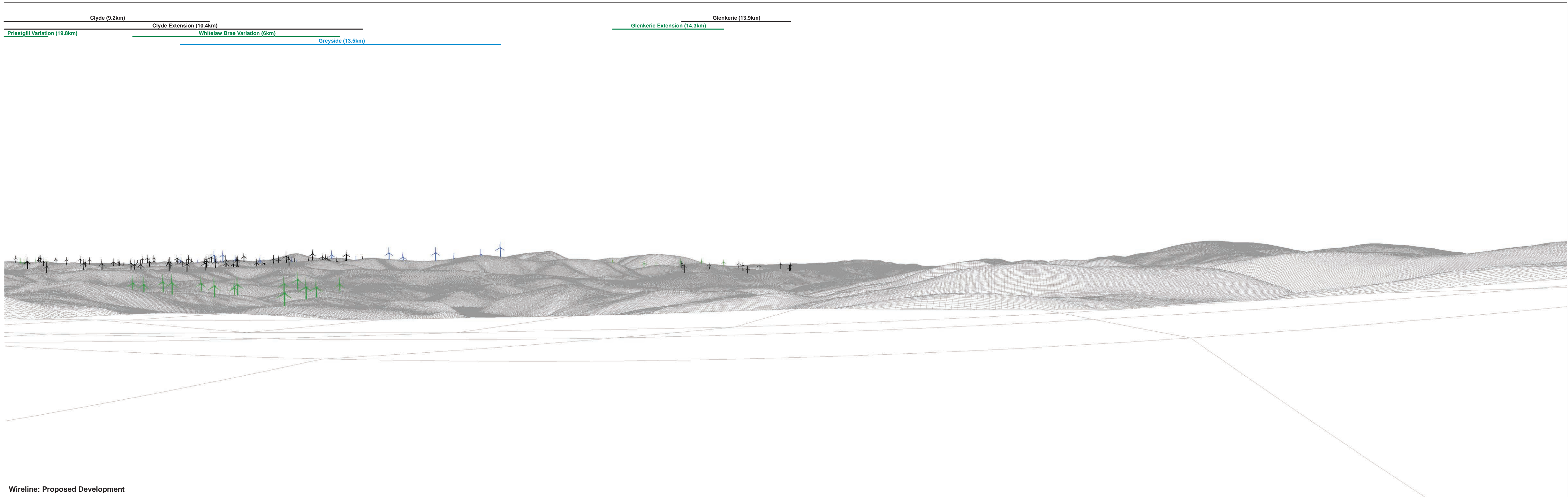
Priestgill Variation (19.8km)



Wireline: Proposed Development

OS reference: 312498 E 613990 N
Eye level: 739.4 mAOD
Direction of view: 258°
Nearest turbine: 11.78 km

Horizontal field of view: 90° (cylindrical projection)
Principal distance: 522 mm
Paper size: 841 x 297 mm (half A1)
Correct printed image size: 820 x 260 mm

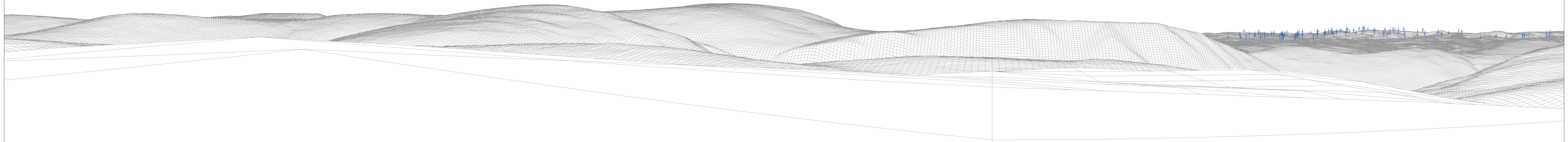


Wireline: Proposed Development

OS reference:	312498 E 613990 N	Horizontal field of view:	90° (cylindrical projection)
Eye level:	739.4 mAOD	Principal distance:	522 mm
Direction of view:	348°	Paper size:	841 x 297 mm (half A1)
Nearest turbine:	11.78 km	Correct printed image size:	820 x 260 mm

Teviot (30.7km)

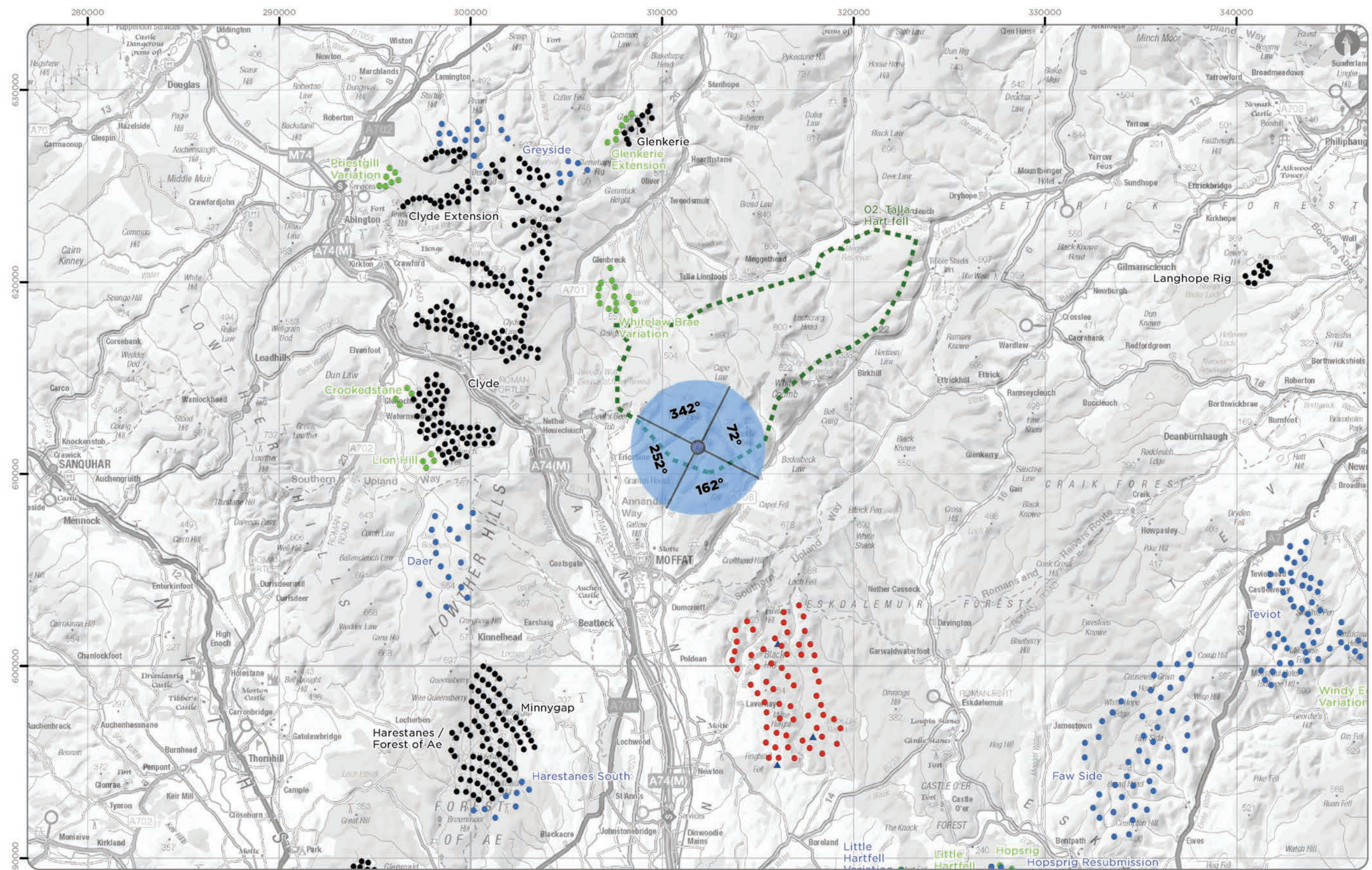
Faw Side (26.5km)



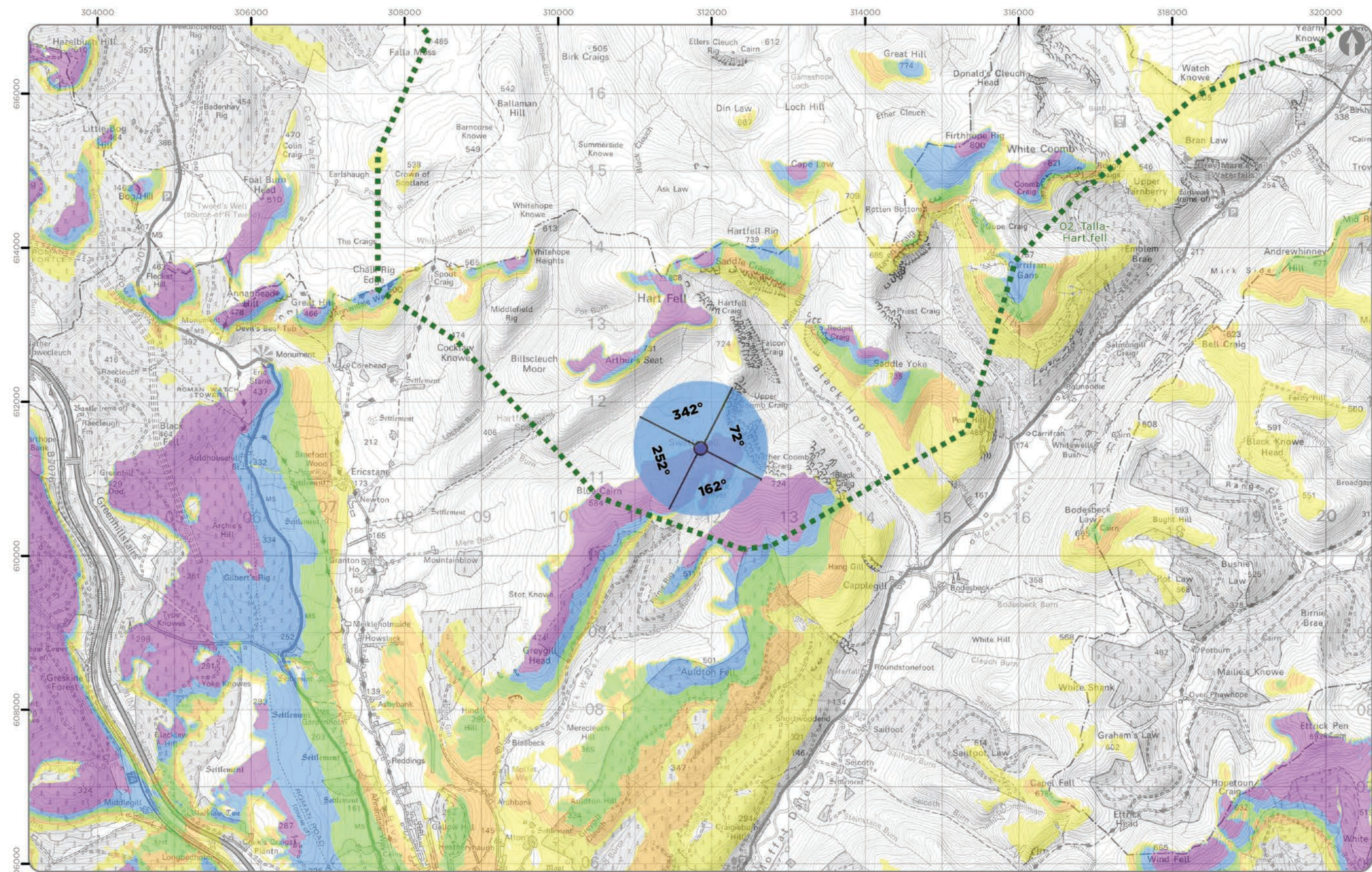
Wireline: Proposed Development

OS reference: 312498 E 613990 N
Eye level: 739.4 mAOD
Direction of view: 78°
Nearest turbine: 11.78 km

Horizontal field of view: 90° (cylindrical projection)
Principal distance: 522 mm
Paper size: 841 x 297 mm (half A1)
Correct printed image size: 820 x 260 mm



Viewpoint Location Plan Baseline Panorama (90 Degree View)
Scale: 1:200,000
0 2.5 5 10 Km



Viewpoint Location Plan (53.5 Degree View)
Scale: 1:50,000
0 0.5 1 2 Km

Note:
1. ZTV: Created using ESRI ArcGIS 10.8.2 software using the following data and parameters:
Blade tip height: 180 / 200 / 225 / 250m
DTM data: OS Terrain 5 and OS Terrain 50 DTM resampled to 10m.
Observer height: 2m
No surface features, such as buildings or trees, were included in the analysis.
Earth curvature and light refraction have been included in the calculations.
2. © Crown copyright and database rights 2022 Ordnance Survey 0100031673.

Legend

- Proposed Turbine Location
- ▲ Proposed Met Mast Location
- Wild Land Area

Cumulative Wind Farm Status:

(November 2022)

- Operational
- Consented
- Appeal / Application

Blade Tip Zone of Theoretical Visibility

No. of Theoretically Visible Turbines

- 1 - 12
- 13 - 24
- 25 - 36
- 37 - 48
- 49 - 60

Viewpoint:

- ▲ 90 Degree Field of View

SCOOP HILL COMMUNITY WIND FARM - ADDITIONAL INFORMATION

AI WLA Figure A2a
WLA Viewpoint 2: Swatte Fell

Ref No: 160971	Created By: LA	Rev No: 1
	Drawing Size: A3	Date: 14/12/2022

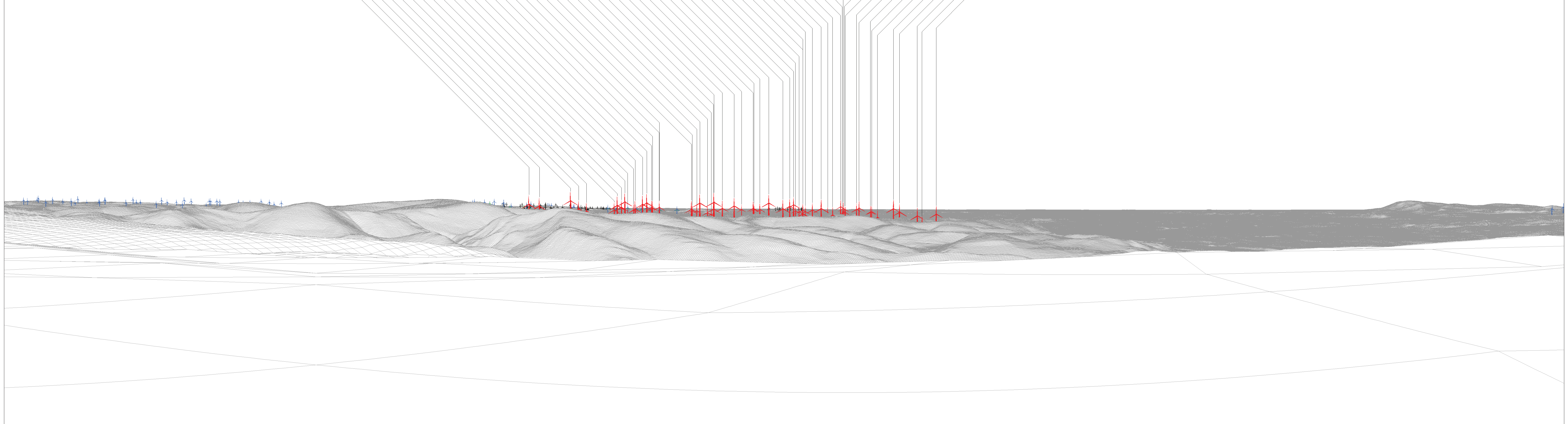
Coordinate System: BNG OS GB 1936 Datum

Faw Side (25.4km)

Loganhead (29.2km) Crossdykes (26.4km) Little Hartfell (24.5km) Proposed Development (9.4km)
 Loganhead Resubmission (29.3km) Ewe Hill (28.5km) Little Hartfell Variation (24.5km) Minsca (31.6km)
 Hopsrig (26.7km) Callisterhall (31.8km) Solwaybank (35.6km)
 Hopsrig Resubmission (26.7km) Beck Burn (47.6km)

Harestanes South (19.7km)

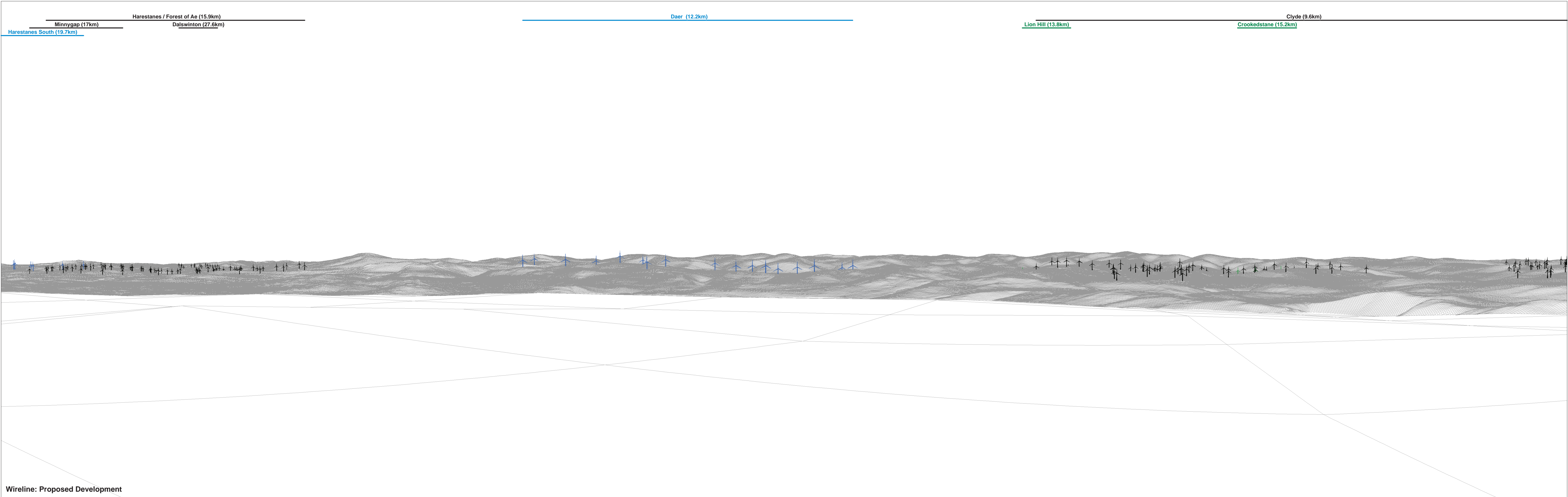
75 74 73 70 69 68 17 67 72 60 59 71 18 19 65 66 57 64 22 58 63 21 48 55 28 20 27 26 53 46 52 47 24 23 44 31 51 49 16 45 50 29 15 40 25 33 43 34 41 77 36 32 39 42 30 11 12 13 76 14



Wireline: Proposed Development

OS reference: 311853 E 611397 N
 Eye level: 731.21 mAOD
 Direction of view: 162°
 Nearest turbine: 9.42 km

Horizontal field of view: 90° (cylindrical projection)
 Principal distance: 522 mm
 Paper size: 841 x 297 mm (half A1)
 Correct printed image size: 820 x 260 mm



OS reference: 311853 E 611397 N
 Eye level: 731.21 mAOD
 Direction of view: 252°
 Nearest turbine: 9.42 km

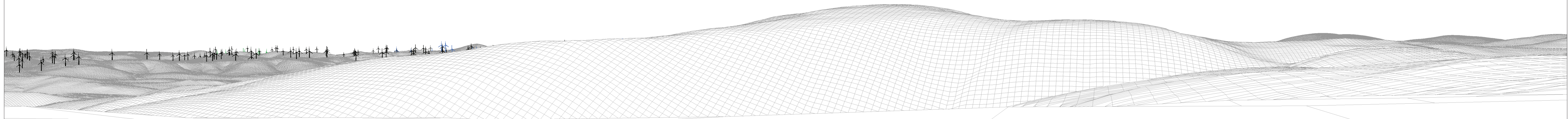
Horizontal field of view: 90° (cylindrical projection)
 Principal distance: 522 mm
 Paper size: 841 x 297 mm (half A1)
 Correct printed image size: 820 x 260 mm

Clyde (9.6km)

Clyde Extension (11.5km)

Priestgill Variation (20.9km)

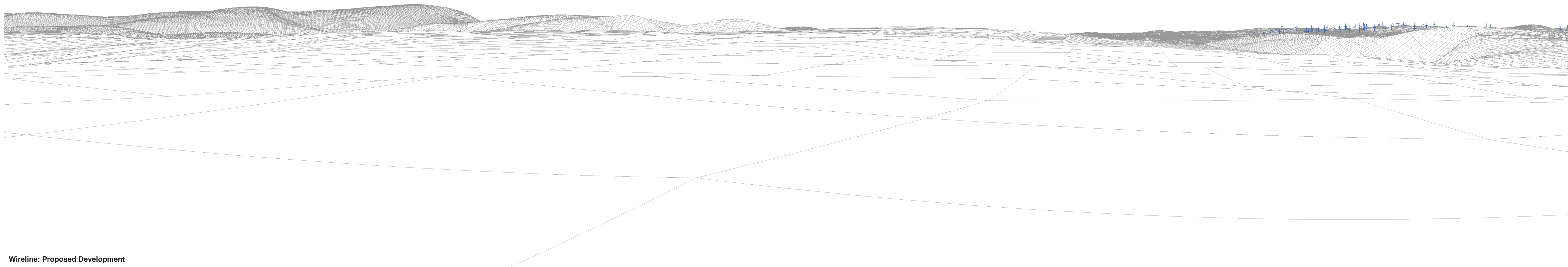
Greyside (15.5km)



Wireline: Proposed Development

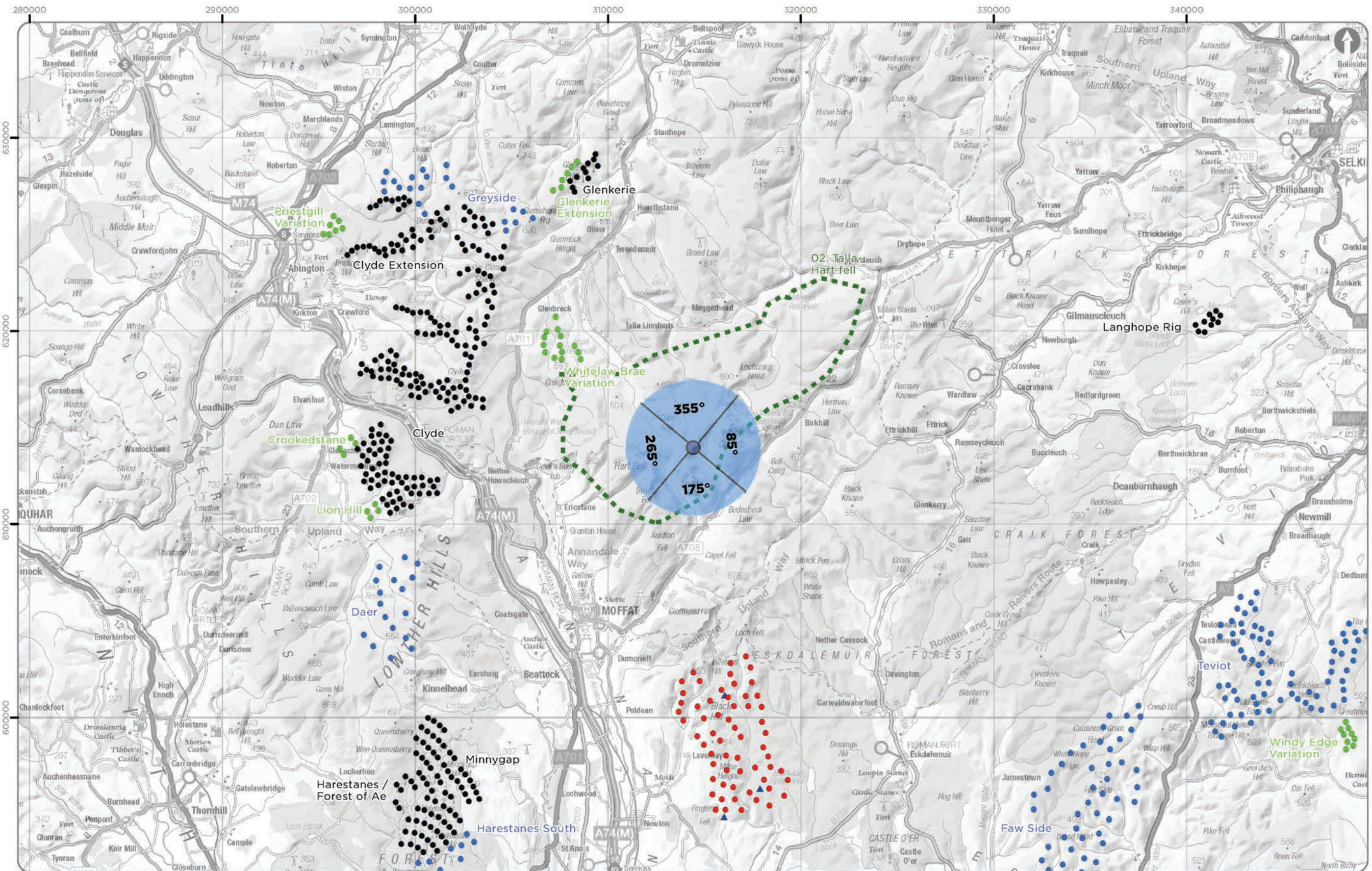
OS reference: 311853 E 611397 N
Eye level: 731.21 mAOD
Direction of view: 342°
Nearest turbine: 9.42 km

Horizontal field of view: 90° (cylindrical projection)
Principal distance: 522 mm
Paper size: 841 x 297 mm (half A1)
Correct printed image size: 820 x 260 mm

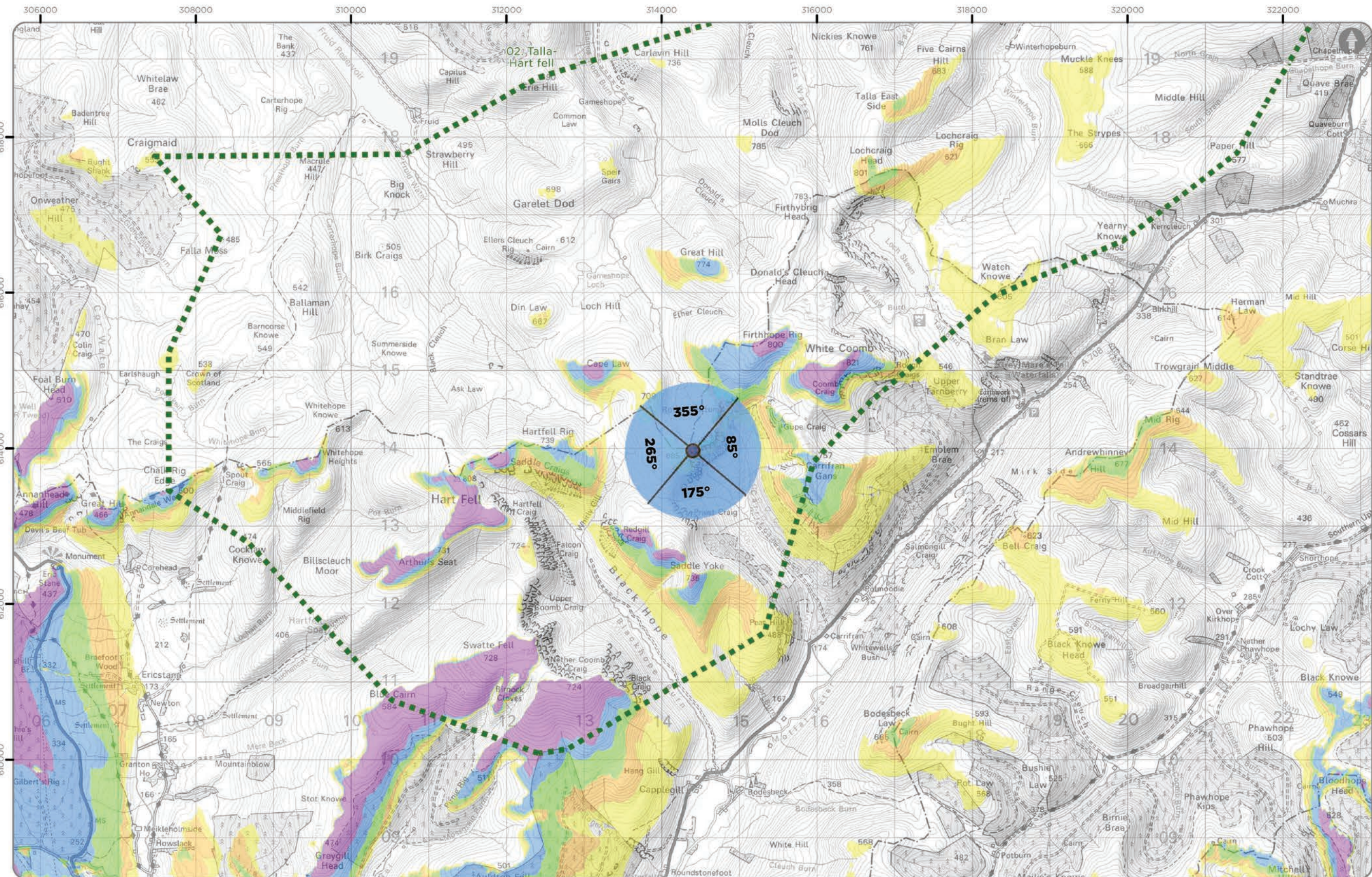


Wireline: Proposed Development

OS reference:	311853 E 611397 N	Horizontal field of view:	90° (cylindrical projection)
Eye level:	731.21 mAOD	Principal distance:	522 mm
Direction of view:	72°	Paper size:	841 x 297 mm (half A1)
Nearest turbine:	9.42 km	Correct printed image size:	820 x 260 mm



Viewpoint Location Plan Baseline Panorama (90 Degree View)
Scale: 1:200,000
0 2.5 5 10 Km



Viewpoint Location Plan (53.5 Degree View)
Scale: 1:50,000
0 0.5 1 2 Km

Note:
1. ZTV: Created using ESRI ArcGIS 10.8.2 software using the following data and parameters:
Blade tip height: 180 / 200 / 225 / 250m
DTM data: OS Terrain 5 and OS Terrain 50 DTM resampled to 10m.
Observer height: 2m
No surface features, such as buildings or trees, were included in the analysis.
Earth curvature and light refraction have been included in the calculations.
2. © Crown copyright and database rights 2022 Ordnance Survey 0100031673.

Legend

- Proposed Turbine Location
- ▲ Proposed Met Mast Location
- ▭ Wild Land Area

Cumulative Wind Farm Status:
(November 2022)

- Operational
- Consented
- Appeal / Application

Blade Tip Zone of Theoretical Visibility

No. of Theoretically Visible Turbines

- 1 - 12
- 13 - 24
- 25 - 36
- 37 - 48
- 49 - 60

Viewpoint:

- ▲ 90 Degree Field of View

SCOOP HILL COMMUNITY WIND FARM - ADDITIONAL INFORMATION

AI WLA Figure A3a
WLA Viewpoint 3: Raven Craig

Ref No: 160971	Created By: LA	Rev No: 1
	Drawing Size: A3	Date: 14/12/2022
Coordinate System: BNG OS GB 1936 Datum		



Faw Side (25.1km)

Loganhead (30.1km)

Loganhead Resubmission (30.2km)

Hopsprig Resubmission (27.6km)

Proposed Development (11.1km)

74

75

73

72

53

19

17

18

28

52

22

27

47

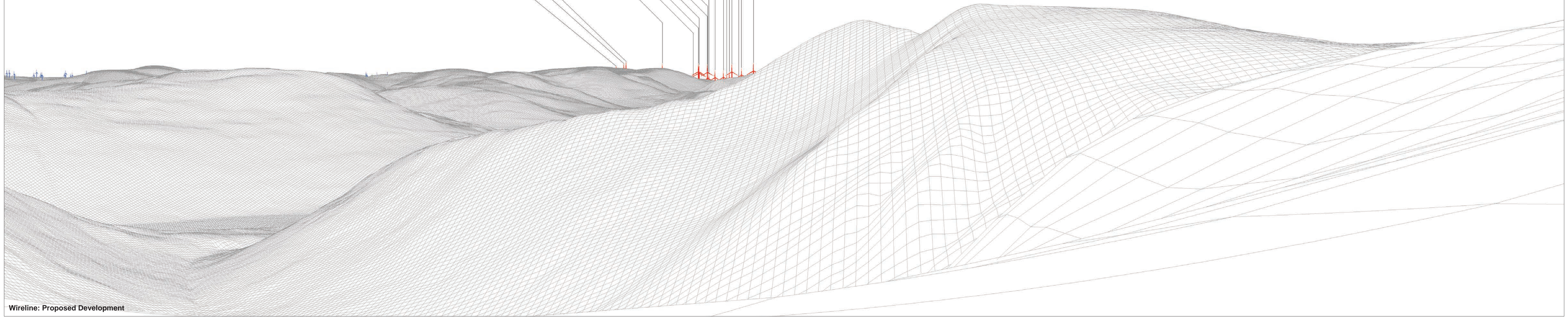
46

21

51

26

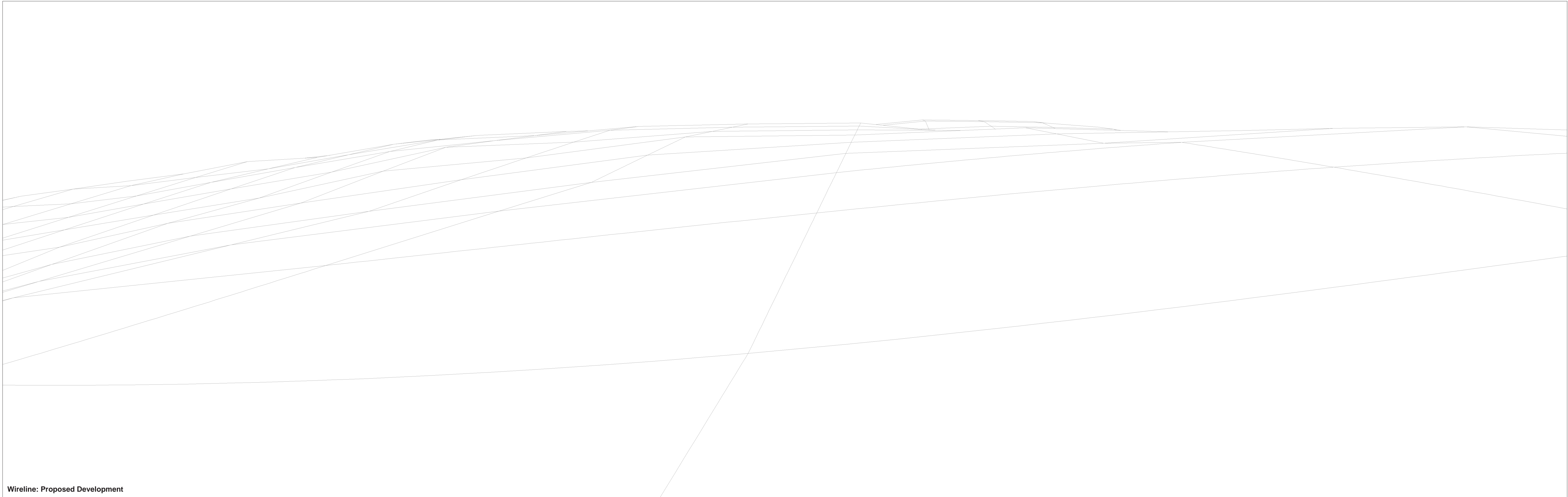
20



Wireline: Proposed Development

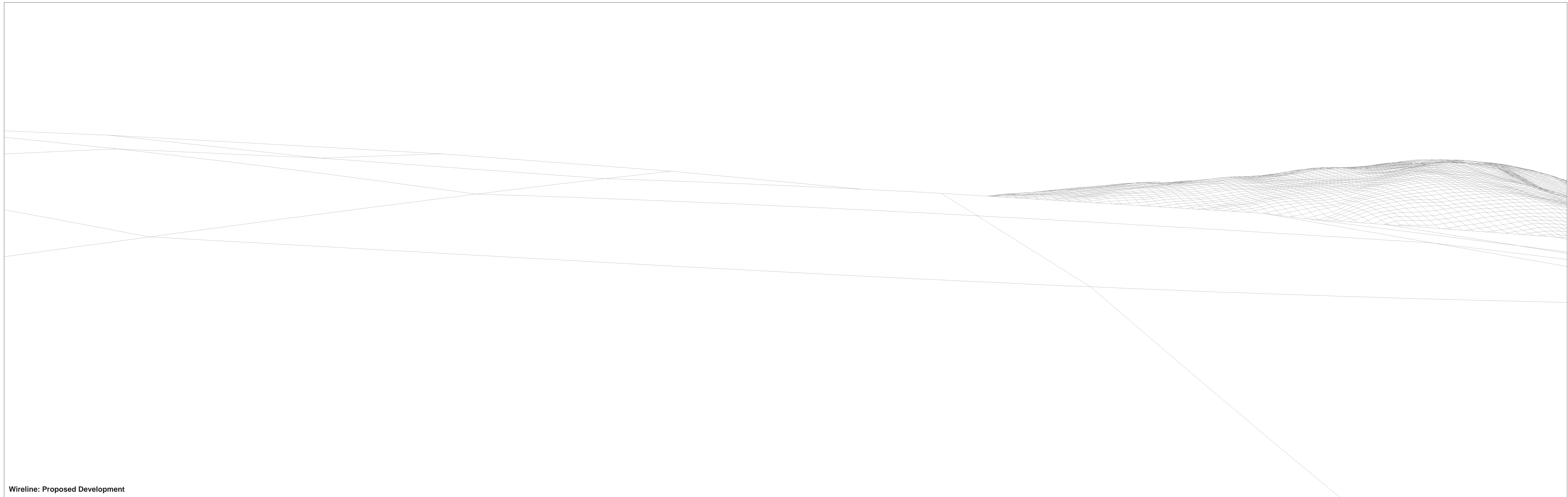
OS reference: 314398 E 613971 N
 Eye level: 655.34 mAOD
 Direction of view: 175°
 Nearest turbine: 11.15 km

Horizontal field of view: 90° (cylindrical projection)
 Principal distance: 522 mm
 Paper size: 841 x 297 mm (half A1)
 Correct printed image size: 820 x 260 mm



Wireline: Proposed Development

OS reference:	314398 E 613971 N	Horizontal field of view:	90° (cylindrical projection)
Eye level:	655.34 mAOD	Principal distance:	522 mm
Direction of view:	265°	Paper size:	841 x 297 mm (half A1)
Nearest turbine:	11.15 km	Correct printed image size:	820 x 260 mm

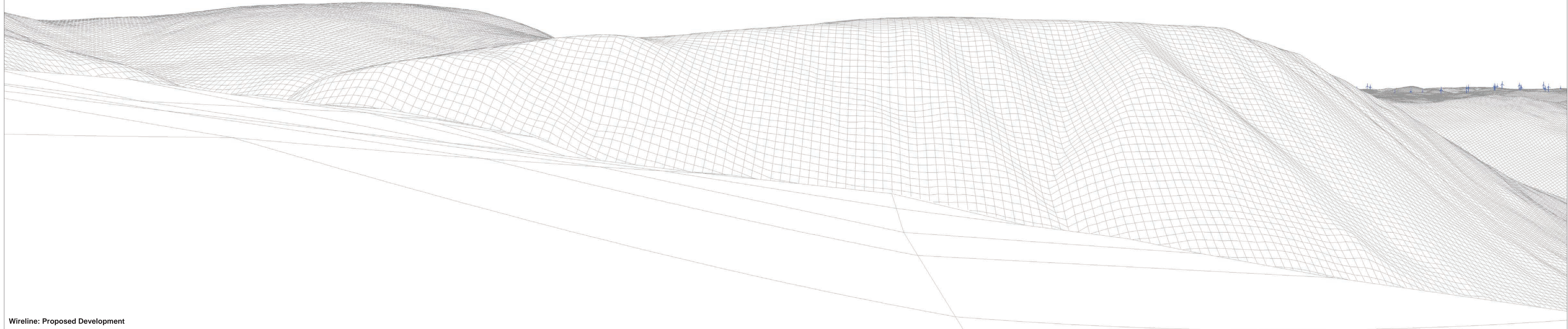


Wireline: Proposed Development

OS reference:	314398 E 613971 N	Horizontal field of view:	90° (cylindrical projection)
Eye level:	655.34 mAOD	Principal distance:	522 mm
Direction of view:	355°	Paper size:	841 x 297 mm (half A1)
Nearest turbine:	11.15 km	Correct printed image size:	820 x 260 mm

Teviot (28.9km)

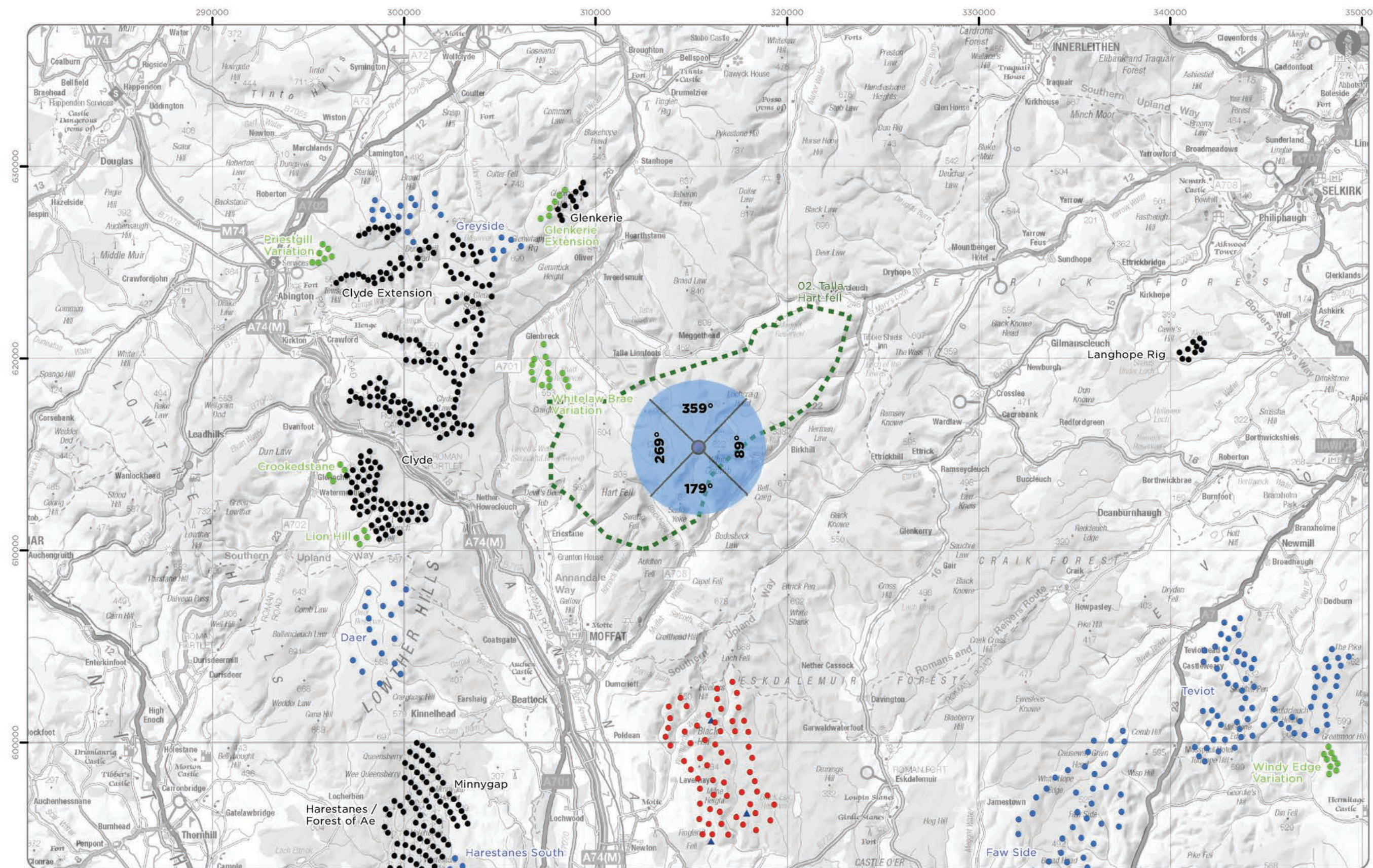
Faw Side (25.1km)



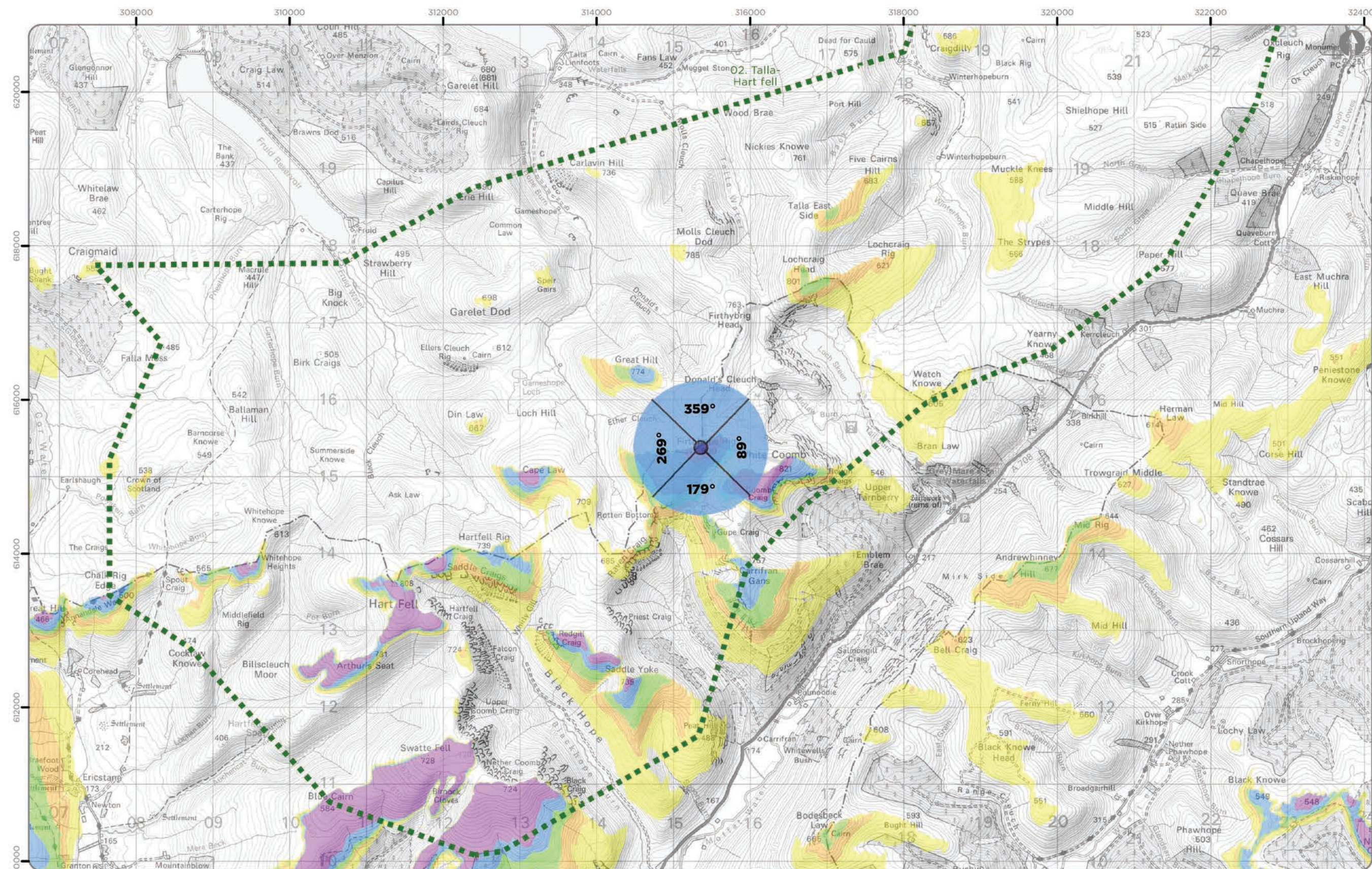
Wireline: Proposed Development

OS reference: 314398 E 613971 N
Eye level: 655.34 mAOD
Direction of view: 85°
Nearest turbine: 11.15 km

Horizontal field of view: 90° (cylindrical projection)
Principal distance: 522 mm
Paper size: 841 x 297 mm (half A1)
Correct printed image size: 820 x 260 mm



Viewpoint Location Plan Baseline Panorama (90 Degree View)
Scale: 1:200,000
0 2.5 5 10 Km



Viewpoint Location Plan (53.5 Degree View)
Scale: 1:50,000
0 0.5 1 2 Km

Note:
1. ZTV: Created using ESRI ArcGIS 10.8.2 software using the following data and parameters:
Blade tip height: 180 / 200 / 225 / 250m
DTM data: OS Terrain 5 and OS Terrain 50 DTM resampled to 10m.
Observer height: 2m
No surface features, such as buildings or trees, were included in the analysis.
Earth curvature and light refraction have been included in the calculations.
2. © Crown copyright and database rights 2022 Ordnance Survey 0100031673.

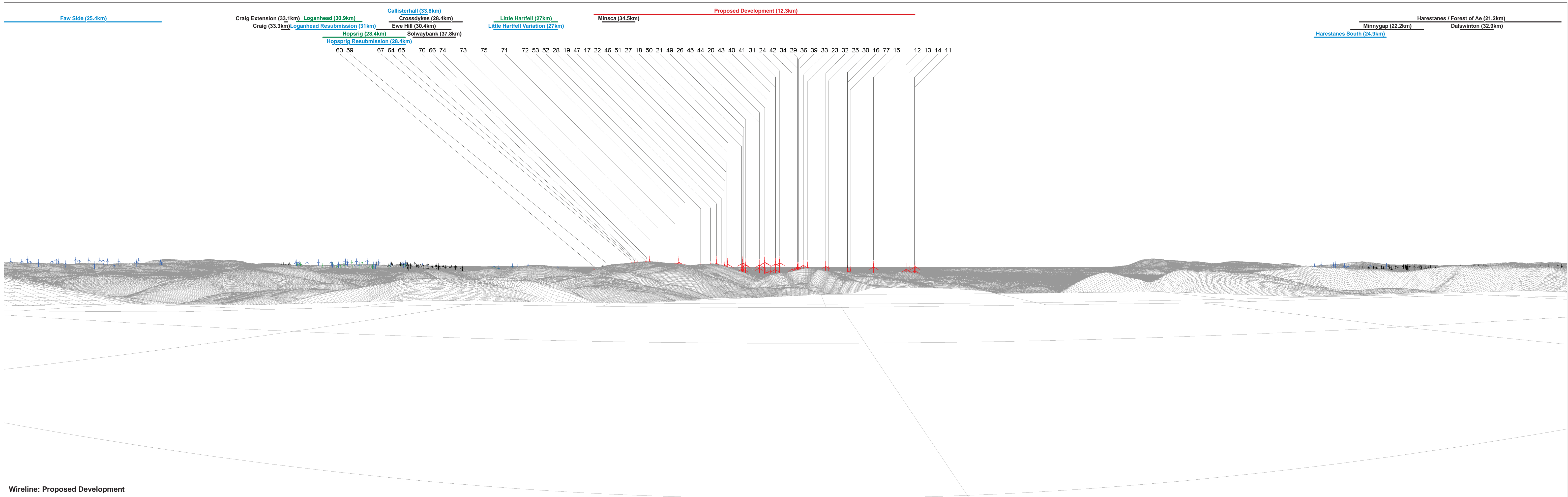
- Legend
- Proposed Turbine Location
 - ▲ Proposed Met Mast Location
 - Wild Land Area
- Cumulative Wind Farm Status:
(November 2022)
- Operational
 - Consented
 - Appeal / Application
- Blade Tip Zone of Theoretical Visibility
- No. of Theoretically Visible Turbines
- 1 - 12
 - 13 - 24
 - 25 - 36
 - 37 - 48
 - 49 - 60
- Viewpoint:
- ▲ 90 Degree Field of View

SCOOP HILL COMMUNITY WIND FARM - ADDITIONAL INFORMATION

AI WLA Figure A4a
WLA Viewpoint 4: Firthhope Rig

Ref No: 160971	Created By: LA	Rev No: 1
	Drawing Size: A3	Date: 14/12/2022

Coordinate System: BNG OS GB 1936 Datum



Wireline: Proposed Development

OS reference: 315351 E 615376 N
 Eye level: 802.5 mAOD
 Direction of view: 179°
 Nearest turbine: 12.34 km

Horizontal field of view: 90° (cylindrical projection)
 Principal distance: 522 mm
 Paper size: 841 x 297 mm (half A1)
 Correct printed image size: 820 x 260 mm

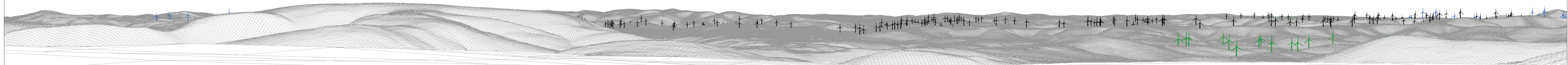
Daer (16.9km)

Crookedstone (18.5km)

Clyde (11.9km)

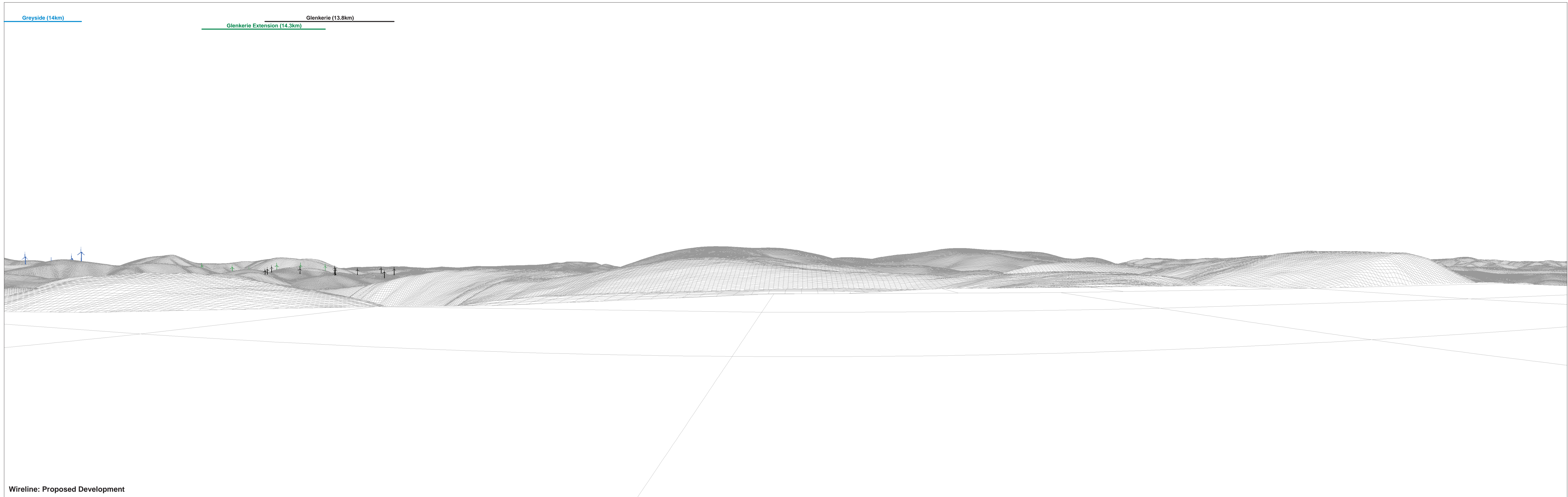
Clyde Extension (12.4km)
Whitelaw Brae Variation (7.5km)
Priestgill Variation (21.5km)

Greyside (14km)



Wireline: Proposed Development

OS reference:	315351 E 615376 N	Horizontal field of view:	90° (cylindrical projection)
Eye level:	802.5 mAOD	Principal distance:	522 mm
Direction of view:	269°	Paper size:	841 x 297 mm (half A1)
Nearest turbine:	12.34 km	Correct printed image size:	820 x 260 mm

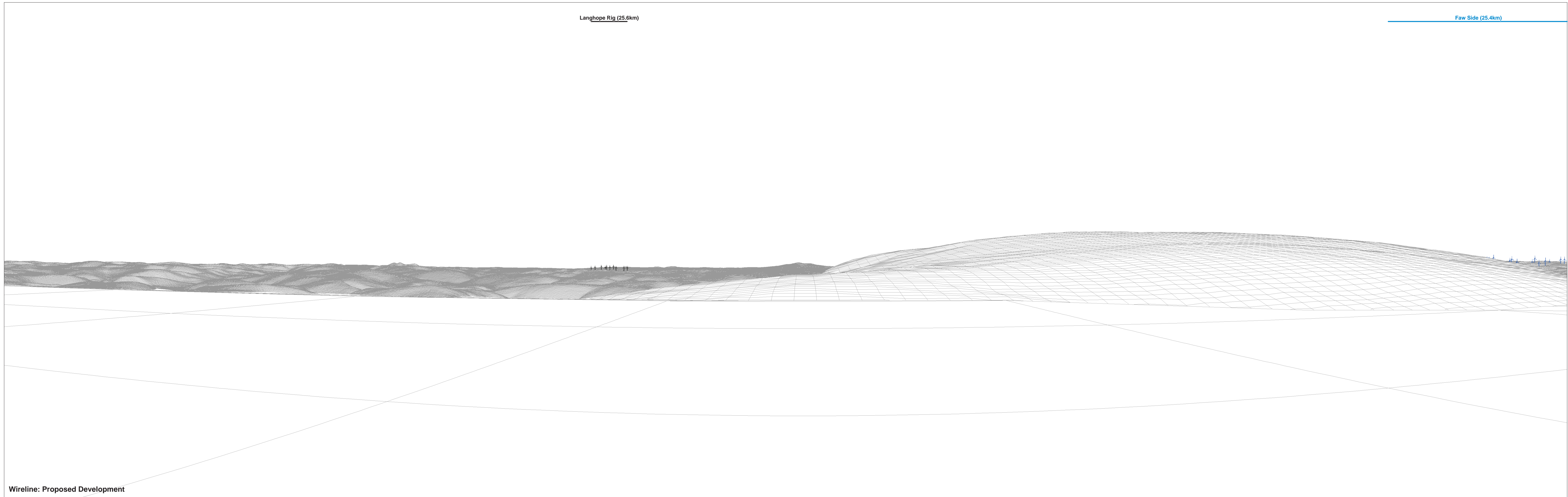


Wireline: Proposed Development

OS reference:	315351 E 615376 N	Horizontal field of view:	90° (cylindrical projection)
Eye level:	802.5 mAOD	Principal distance:	522 mm
Direction of view:	359°	Paper size:	841 x 297 mm (half A1)
Nearest turbine:	12.34 km	Correct printed image size:	820 x 260 mm

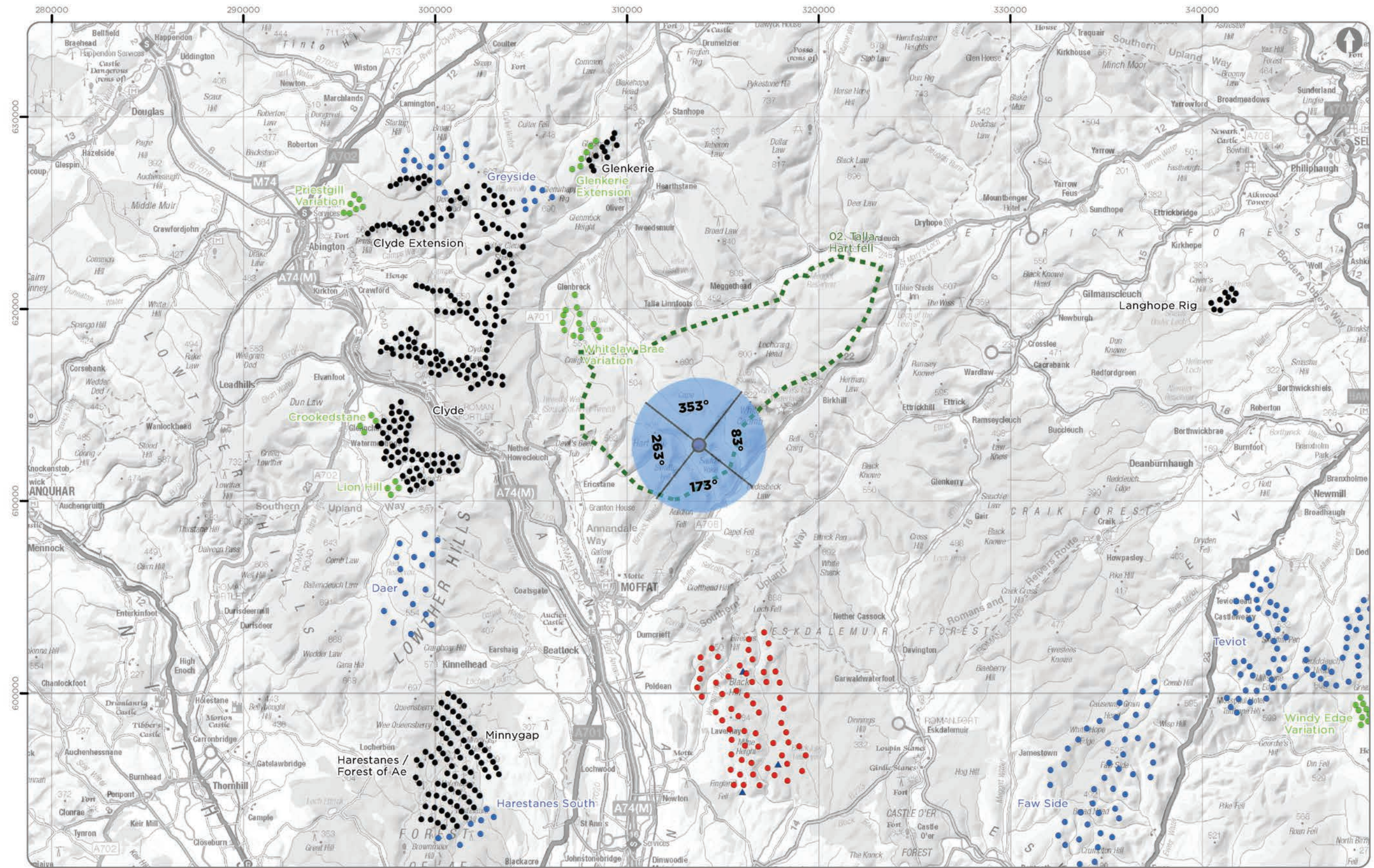
Langhope Rig (25.6km)

Faw Side (25.4km)

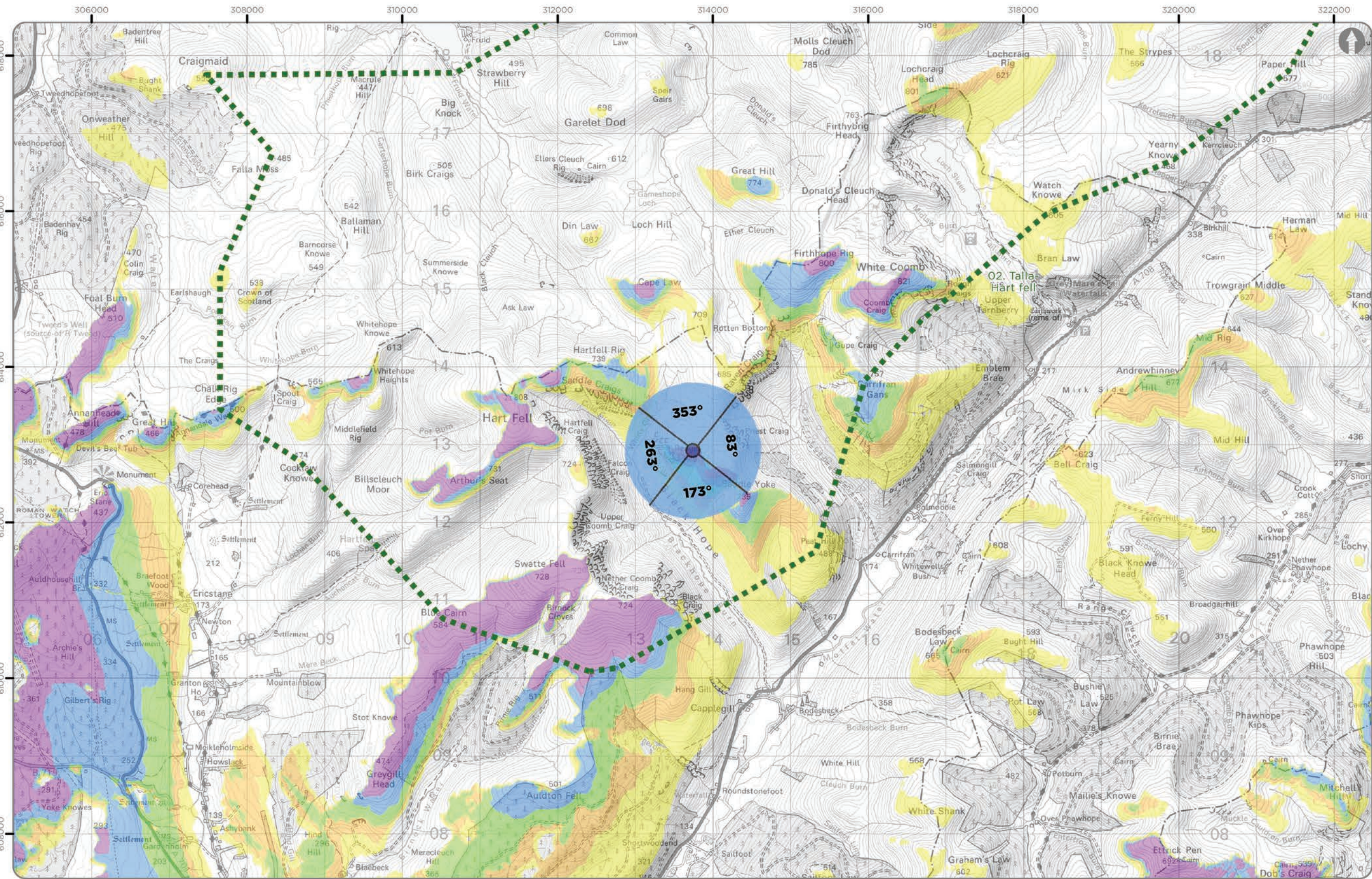


Wireline: Proposed Development

OS reference:	315351 E 615376 N	Horizontal field of view:	90° (cylindrical projection)
Eye level:	802.5 mAOD	Principal distance:	522 mm
Direction of view:	89°	Paper size:	841 x 297 mm (half A1)
Nearest turbine:	12.34 km	Correct printed image size:	820 x 260 mm



Viewpoint Location Plan Baseline Panorama (90 Degree View)
Scale: 1:200,000
0 2.5 5 10 Km



Viewpoint Location Plan (53.5 Degree View)
Scale: 1:50,000
0 0.5 1 2 Km

Note:
1. ZTV: Created using ESRI ArcGIS 10.8.2 software using the following data and parameters:
Blade tip height: 180 / 200 / 225 / 250m
DTM data: OS Terrain 5 and OS Terrain 50 DTM resampled to 10m.
Observer height: 2m
No surface features, such as buildings or trees, were included in the analysis.
Earth curvature and light refraction have been included in the calculations.
2. © Crown copyright and database rights 2022 Ordnance Survey 0100031673.

Legend

- Proposed Turbine Location
- ▲ Proposed Met Mast Location
- Wild Land Area

Cumulative Wind Farm Status:
(November 2022)

- Operational
- Consented
- Appeal / Application

Blade Tip Zone of Theoretical Visibility

No. of Theoretically Visible Turbines

- 1 - 12
- 13 - 24
- 25 - 36
- 37 - 48
- 49 - 60

Viewpoint:

- ▲ 90 Degree Field of View

SCOOP HILL COMMUNITY WIND FARM - ADDITIONAL INFORMATION

AI WLA Figure A5a
WLA Viewpoint 5: Redgill Craig

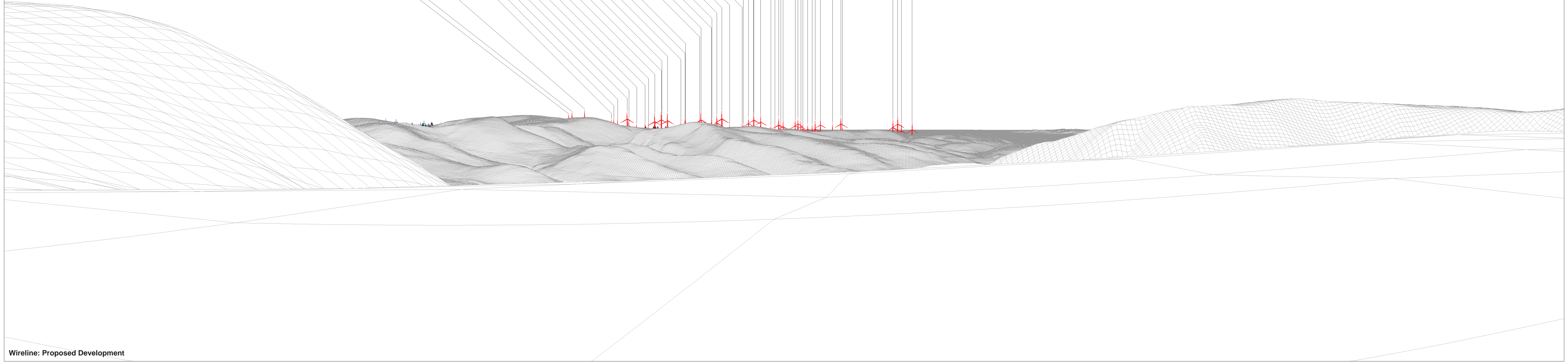
Ref No: 160971	Created By: LA	Rev No: 1
	Drawing Size: A3	Date: 14/12/2022

Coordinate System: BNG OS GB 1936 Datum



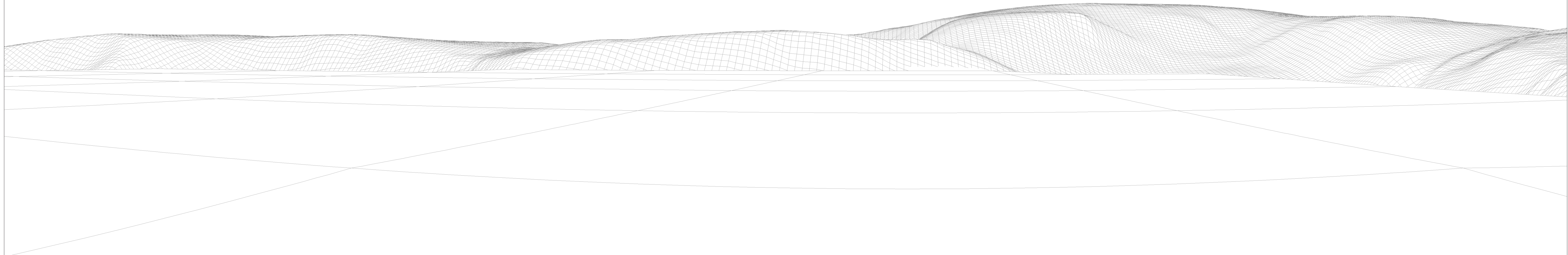
Loganhead Resubmission (29.6km) Crossdykes (26.9km) **Proposed Development (10.3km)**
 Ewe Hill (28.9km)
 Hopsrig (27km) Callisterhall (32.2km)
 Hopsrig Resubmission (27km)

74 75 73 65 64 66 72 71 58 63 55 17 19 48 18 53 28 22 27 21 47 46 26 20 51 49 50 44 45 24 31 40 43 23 41 29 34 33 36 42 39 25 16 32 77 15 30 12 11 13 14



Wireline: Proposed Development

OS reference: 313738 E 612925 N Horizontal field of view: 90° (cylindrical projection)
 Eye level: 690.1 mAOD Principal distance: 522 mm
 Direction of view: 173° Paper size: 841 x 297 mm (half A1)
 Nearest turbine: 10.34 km Correct printed image size: 820 x 260 mm

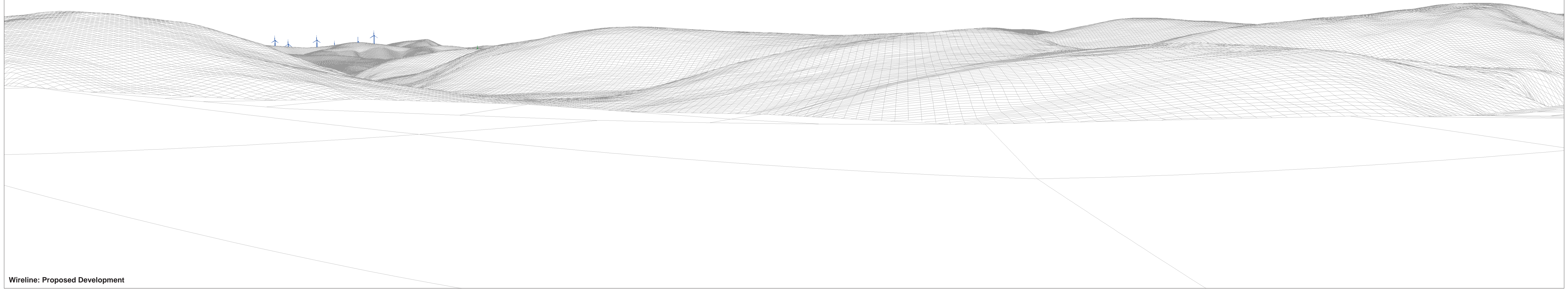


Wireline: Proposed Development

OS reference:	313738 E 612925 N	Horizontal field of view:	90° (cylindrical projection)
Eye level:	690.1 mAOD	Principal distance:	522 mm
Direction of view:	263°	Paper size:	841 x 297 mm (half A1)
Nearest turbine:	10.34 km	Correct printed image size:	820 x 260 mm

Greyside (15km)

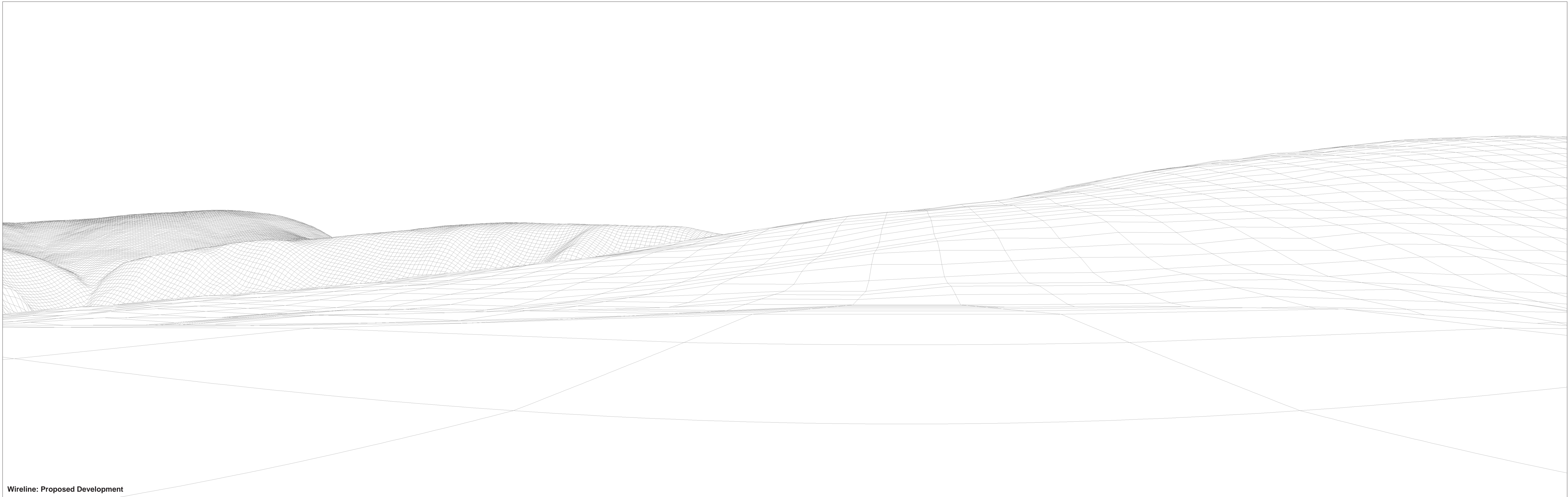
Glenkerie Extension (15.8km)



Wireline: Proposed Development

OS reference: 313738 E 612925 N
Eye level: 690.1 mAOD
Direction of view: 353°
Nearest turbine: 10.34 km

Horizontal field of view: 90° (cylindrical projection)
Principal distance: 522 mm
Paper size: 841 x 297 mm (half A1)
Correct printed image size: 820 x 260 mm



Wireline: Proposed Development

OS reference:	313738 E 612925 N	Horizontal field of view:	90° (cylindrical projection)
Eye level:	690.1 mAOD	Principal distance:	522 mm
Direction of view:	83°	Paper size:	841 x 297 mm (half A1)
Nearest turbine:	10.34 km	Correct printed image size:	820 x 260 mm