



Scoop Hill Community Wind Farm

Commitment to Communities





Executive Summary

This report provides information on the Commitment to Communities (CTC) initiative and is an accompanying document to the Additional Information (AI) submission for Scoop Hill Community Wind Farm. This report has been compiled to give an updated insight into Community Windpower Limited's (CWL) established community legacies across Scotland, and CWL's '*Buy Scottish*' policy which supports local businesses, provides highly skilled jobs, and champions a sustainable future for Scotland. It is a full replacement to the CTC report submitted as part of the original EIA application in November 2020 and provides information on CWL's commitment to the local host communities surrounding the proposed development in relation to community benefit funding.

This CTC report refers to a range of innovative community-based initiatives and assets including: support for training and business services, partnerships with local schools and educational establishments, and economic assistance for vulnerable people to help with their energy bills in this cost-of-living crisis.

Whilst some suggestions for initiatives, community assets, and technological installations have been amended or removed since the original application was submitted, CWL remains open and receptive to future suggestions from members of the communities which surround the proposed Scoop Hill Community Wind Farm. CWL will continue to consult with communities and local groups throughout the planning process to agree upon the best assets and initiatives to be developed and implemented for their local communities.

This CTC report also refers to a legacy of community assets which have been successfully delivered by CWL to the local host communities surrounding their eight operational wind farms. This demonstrates CWL's successful track record and ability to deliver community assets which has included the construction and completion of community buildings, training and job creation, educational outreach to help enhance children's development, and funds which support vulnerable people through the cost-of-living crises.

CWL believe the proposed Scoop Hill Community Wind Farm, which will generate over £1.8 billion of economic investment, can act as a catalyst for business growth, increased employment and community enrichment, the combination of which will create a lasting legacy benefiting local residents, businesses and visitors.

Introduction

This CTC report has been prepared by CWL on behalf of the Applicant to accompany the Additional Information application for Scoop Hill Community Wind Farm, situated in Dumfries and Galloway, approximately 5km south east of Moffat and 11km north east of Lockerbie, as shown in Figure 1.

This report details CWL's 'Buy Scottish' policy as well as the further community focused commitments being made to the local area and host communities through the planning, construction and operation of the proposed Scoop Hill Community Wind Farm.

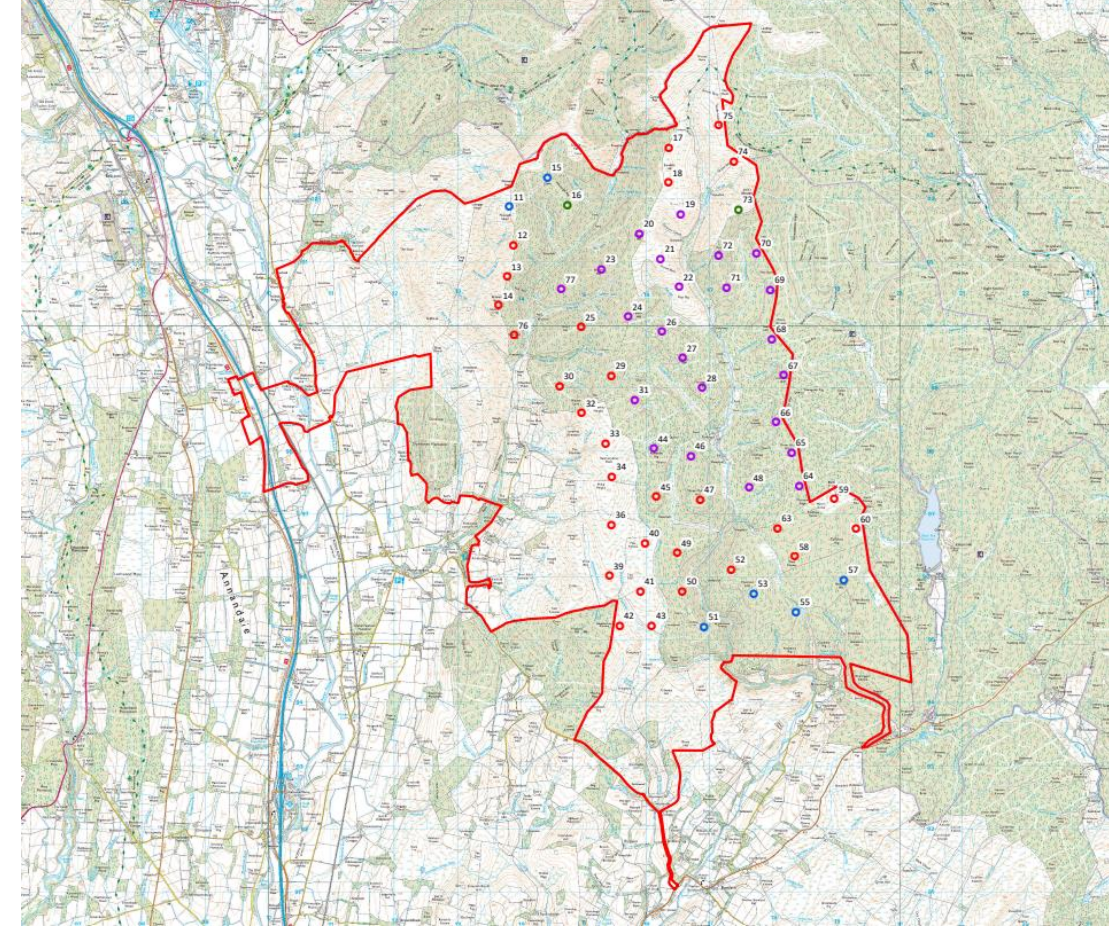
Details regarding economic investment, employment and educational opportunities, and the community assets to be provided throughout the project, are included in this report as well as within Section 5: Socio-economics, Population and Community Involvement of the Environmental Impact Assessment Report (EIAR) and the updated version in the AI submission.

Project Description

Scoop Hill Community Wind Farm has been redesigned and now comprises of 60 wind turbines and associated infrastructure and will be capable of generating a minimum of 432 Megawatts (MW) of clean electricity each year of operation. This is enough electricity to power the equivalent of **450,000 homes** each year. The project will also help deliver the Scottish Government's ambitious targets for doubling Scotland's installed capacity of onshore wind by 2030 and reducing carbon emissions by saving **735,672 tonnes of CO₂** each year. Over the 40-year lifetime of the wind farm, this would be equivalent to approximately **29,426,880 tonnes of CO₂** displaced from the atmosphere.

Figure 1: Scoop Hill Community Wind Farm site layout.

- Legend
- Site Boundary
 - Wind Turbine (180m to Tip)
 - Wind Turbine (200m to Tip)
 - Wind Turbine (225m to Tip)
 - Wind Turbine (250m to Tip)



The Applicant

The Applicant is CWL Energy Limited, which is a sister company to Community Windpower Limited. CWL Energy Limited will be the company for which the Scoop Hill Community Wind Farm will be developed, constructed, and operated by, however for the sake of clarity, CWL is making the AI submission on behalf of CWL Energy Limited. Therefore, this CTC will reference CWL.

Formed in 2001, CWL is a Scottish focused, independent, UK renewable energy company working closely with local communities to build onshore wind farms that can provide tangible economic, educational, and environmental benefits to whole communities and local schools.

CWL believes in an open and consultative approach with our host communities during the development stage of a wind farm project and during all stages of the planning process, construction and long-term operation. By learning from the development, construction, and operation of our existing medium scale wind farms in Scotland, CWL has been able to use its extensive knowledge and experience to design sites that are sympathetic to local landscapes and can provide generation to meet local and Scottish energy needs.

Since the operation of CWL's first wind farm in 2006, it has been dedicated to providing meaningful community benefits to our local host communities. As of April 2023, CWL has provided over £8 million in community benefits funding across its eight operational wind farms in Scotland.

Investment and Employment

CWL takes its commitment to communities very seriously. Through direct investment, it's 'Buy Scottish' policy, Memorandum of Understandings with Scottish companies, and indirect investment, ensuring that the communities surrounding the site can benefit from the development, has been a tenet of the business since its very inception.

In addition to the material community benefits that CWL will offer, both short-term and long-term employment benefits will also be provided both directly and indirectly.

The following pages demonstrate in more detail how the investments will be made and detail the employment opportunities provided by the development.

Project Investment

Significant investment has already been injected into the Scottish economy during the design and development of Scoop Hill Community Wind Farm. CWL have endeavoured to work with Scottish-based consultants and services for ecological, archaeological, hydrological, landscape and visual, legal, meteorological and architectural works that have gone into creating the Environmental Impact Assessment Report (EIAR) submitted for this application in November 2020 and the subsequent Additional Information (AI) submission of which this updated CTC report forms a part.

During its 40-year operational life, Scoop Hill Community Wind Farm is expected to deliver a total investment of over £1.8 billion, which will benefit both local and regional economies. This will include business rates to Dumfries and Galloway Council of circa £5.4 million per annum, operations and maintenance costs of the turbines, rents and electrical grid connection costs, as well as general site maintenance costs and the permanent employment of staff in terms of wind turbine technicians and site maintenance staff.

In addition to this significant investment, CWL also pledges to support the local, host communities with an annual community benefit fund equivalent to £5,000 per MW, which equates to £2.16 million per year. This will be paid throughout the life of the wind farm making the total investment in the local host-communities of £86 million over its 40-year operational life. The fund will be made available to the communities of Eskdalemuir, Johnstonebridge, Kirkpatrick Juxta, Moffat, North Milk, and Wamphray.



£1.8bn total investment over 40-year lifetime





CWL's 'Buy Scottish' Policy

CWL is committed to working with local businesses in the area surrounding Scoop Hill Community Wind Farm to create a project which is mutually beneficial.

As part of this, CWL will be implementing its '*Buy Scottish*' Policy. This policy was set up and designed so that economic investment from wind farms during development, construction and operation is made directly into the local area surrounding the wind farm, the wider region and within Scotland. The delivery of this project will generate substantial economic investment to businesses with priority given to those businesses and workers located closest to the development site.

Since 2006, CWL has invested over £500 million for its eight operational wind farms located in Scotland which is expected to increase to £2 billion by 2025. The '*Buy Scottish*' policy is therefore immensely valuable and important to Scotland in terms of boosting and building the local, regional and national economies. Below are details of a selection of our '*Buy Scottish*' policy case studies: RJ McLeod, AMD Contract Services, Grange Quarry, and CS Wind.



RJ McLeod

Glasgow-based civil contractor RJ McLeod has completed three projects for CWL, with the fourth project, Sneddon Law Community Wind Farm, currently under construction in East Ayrshire. In December 2022, RJ McLeod surveyed their employees working on-site at Sneddon Law, and found that 56% of the workers resided in the Kilmarnock postcode area. This indicates that a significant amount of steady local employment has been generated through this particular CWL-RJ McLeod partnership.

Speaking on the construction of Sneddon Law, Joint Managing Director at RJ McLeod, Bruce Clark, said: “This is our fourth project with Community Windpower, who recognise the skills and experience of our staff and operatives as well as our track record of using local resources. We look forward to jointly delivering this important energy asset.”

AMD Contract Services

Dumfries-based AMD Contract Services Limited constructed 14km of access tracks for Sanquhar Community Wind Farm and took on the main civil works contract for the project (with a value of £2 million). This enabled them to take on additional staff and apprentices from the local area during the construction period, as well as providing local people with valuable skills.

With the skills gained from the construction of Sanquhar Community Wind Farm, their new employees were able to go on and get involved with further wind farm construction work, including CWL’s Millour Hill Extension Wind Farm in North Ayrshire.

Grange Quarry

Grange Quarry supplies aggregate materials and mixed concrete across Dumfries and Galloway, Scottish Borders, and Cumbria, and have established their own concrete plants and recycling stations.

Robbie Dodd, Operations Director at Grange Quarry & Concrete, said: “We’ve previously worked with Community Windpower on projects, and know first-hand the positive impact Scoop Hill will bring to the regional economy. Projects such as this will inevitably help retain and create valuable and skilled jobs in the local area.”

CS Wind

CWL purchased the 9 steel towers for its Sanquhar Community Wind Farm in 2017, 16 steel towers for Aikengall I Community Wind Farm in 2009 and 6 towers for Dalry Community Wind Farm in 2006 from former Scottish based manufacturer CS Wind (previously known as Vestas Campbeltown).

CWL continually seeks opportunities to bolster the Scottish supply chain to help support jobs and the Scottish economy

Throughout the development process of Scoop Hill Community Wind Farm, employees of CWL, contractors and consultants have all ‘indirectly’ invested in and utilised local facilities during their visits, including but not limited to accommodation, shops, cafés and fuel stations. This spend will continue throughout the duration of the planning process, construction and 40 years of operation.

There will be continued ‘indirect’ financial expenditure into the local area from the construction and operation of the wind farm due to the following:

- Construction staff will be in the area for approximately 18 months;
- Staff from CWL and those working on behalf of CWL have regularly visited the site over the development phase and will continue to do so during the construction phase and once it is operational, as they will visit the site to monitor the turbines and wind farm operations;
- Staff will also host and attend community events in the local area, and this will continue for the life of the wind farm(40 years);
- Further details of the specialists and services employed to assist with Scoop Hill Community Wind Farm can be found in Section 5: Socio-Economics, Population and Community Involvement of the EIAR and the AI.



Indirect Investment in Local Facilities and Services



Employment Overview

During the construction phase, Scoop Hill Community Wind Farm would support over 250 jobs across the construction and building supplies industry. The wider employment benefits can be found in Table 2.

CWL will invite numerous Scottish civil, electrical and engineering contractors to tender, with preference being given to companies based in Dumfries and Galloway, as well as companies who are willing to invest within the local area through expenditure and investment in the local people. This is another element of our *'Buy Scottish'* policy, and CWL are very proud to appoint local civil and electrical companies to work on and build its wind farms. As demonstrated through the construction of Sanquhar Community Wind Farm in 2017, three Scottish contractors were employed – AMD Contract Services of Dumfries, Collett and Sons Ltd, based in Grangemouth, and Windhoist, based in Irvine.

The *'Buy Scottish'* policy invitation to tender for Scottish civil, electrical and engineering contractors ensures they are informed of the various contract and business opportunities the development presents, which in the long run safeguards jobs and investment within Scotland. Through the policy, a 'Meet the Buyer' event will be held to promote the construction work opportunities and to encourage local companies to register their details in preparation for the tendering process.

Over the development and construction of Scoop Hill, £206.8 million Gross Value Added (GVA), and 3,260 job years, would be generated across Scotland. In Dumfries and Galloway alone, £54.4 million GVA, and 883 job years, would be generated over the development and construction periods¹.

Table 2: Services and Contractors which will be required

Contractors/Required Services
Ecologists, Site Engineers & other professionals
Electrical switchgear design
Fencers
Fibre optic communication design
Foresters
Fuel supplies and delivery
Grid capacity works
Local amenities
Lightning protection survey and design
Materials supply and delivery
Meteorological mast installation
Power line design
Track construction
Security & Health and Safety
Signage
Sub-contractors
Substation design and construction
Turbine foundation and construction
Turbine manufacture and erection
Webcam design and installation
Local accommodation

1. 'Economic Impact of Community Windpower's Scoop Hill Community Wind Farm', BiGGAR Economics. Published on the 10th February 2023.

Training and Development of the Workforce



Operational Employment Opportunities

Through the operational life of the wind farm, CWL will tender wind farm related maintenance works to local companies and will discuss apprenticeships and local employability options with Developing the Young Workforce Dumfries and Galloway (DYW D&G) and the local college. CWL will afford more weight to a company's tender proposal should apprenticeships and additional training be offered as part of their tender application.

CWL will request that the appointed Civil contractor takes on and fully trains a minimum of six apprentices, with preference given to people from the local area, and then from the wider Dumfries and Galloway region. Further information on this, and our work with local colleges and schools is detailed later in this CTC, as supporting the education, training and careers of the younger generation is a key aim of CWL.

Due to the proposed size of the development, and from CWL's experience of operating other wind farm developments, it is anticipated that general site maintenance works would be required throughout the year, and for the entirety of the 40-year operational phase, on a wide variety of different tasks and responsibilities.

While maintenance will be required on the civil aspect of the scheme such as road repairs to access tracks and hardstands, fencing, maintenance and inspections, maintenance will also be required on the environmental and ecological assets such as habitats, watercourse crossings and culverts and other assets such as newly planted trees and shrubs. Therefore, there are opportunities for local contractors to tender for works maintaining such assets throughout the lifetime of the wind farm.

Other jobs required as a direct result of the wind farm will include the need for communications maintenance. All of our operational wind farms have the ability to be monitored remotely, therefore there is becoming an increasing need for a communications expert to be available to maintain the company's operational communicational assets. A local, Scottish-based employee will be taken on to cover the operational aspect of the site communications at Scoop Hill and our other operational wind farms.

As part of site Operations and Health & Safety, all of the Company's operational wind farms are managed through Natural Power's Operational Control Centre based near Carsphairn. Once built and commissioned, Scoop Hill will fall under the same remit, as 24-hour work control will be required for the site, meaning the potential for further staff at Natural Power to cover the operational asset, along with all others. Throughout the wind farm's operational lifetime, CWL will look to create jobs, whether directly or indirectly from the wind farm, with preference always given to local people.

Substation design
Turbine manufacture Fencers
Fuel supplies Fibre optic design
Ecologists Meteorological mast installation
Electrical switchgear design Health & Safety
Grid capacity works Sub-contractors
Local amenities Waste collection
Plant hire Power line design
Foundation construction
Foresters

CWL is wholly committed to fulfilling community obligations once planning permission has been obtained. CWL works closely with its local host communities to provide significant economic, educational, environmental and social benefits for the lifetime of the wind farm. As of April 2023, CWL has donated over £8 million to the host communities of its portfolio of Scottish onshore wind farm projects.

Scoop Hill Community Wind Farm will provide community benefits during the lifetime of the wind farm, totalling £86.4 million, via an annual fund of £2.16 million. This is equivalent to £5,000 per MW, which is in line with the Scottish Government guidance and has now been committed to in response to community consultation comments received following the submission of the original EIAR in November 2020.

CWL are liaising with Community Councils, Local Development Groups, local residents, and other local organisations for suggestions on how community benefits and long-term community assets can not only benefit the local communities, but enhance the local area, potentially bringing jobs and money into the local communities. With the development, construction, and operation of Scoop Hill Community Wind Farm, there is significant opportunity to benefit and enhance its host communities.



Community Assets



Enhancement of Shared Recreation Public Access

There is a significant opportunity here to enhance the recreation opportunities in and around the proposed Scoop Hill Community Wind Farm area.

There is a large existing path network within and around the proposed development. CWL is therefore proposing to maintain the paths that fall within the site boundary and to add signage where necessary to help walkers, hikers, horse riders, and cyclists to navigate around the wind farm site.

The applicant will look to include information/display boards at suitable locations along the route, displaying facts and figures about the turbines, route maps, and some health and safety guidelines since the paths are situated within an operational wind farm. The information boards are also a useful educational tool, as they can be used to display information about:

- The surrounding landscape; and
- Local flora and fauna.

These plans will be discussed further with the Council's Countryside Access Officer post consent.



Shared Ownership

As presented in the Scottish Government's Onshore Wind Policy Statement² published in December 2022, *“Community benefit from, and shared ownership of, renewable energy developments have a key role to play in engaging communities and securing Scotland's transition to net zero”*. CWL are open to the prospect of launching a feasibility study into shared ownership to gauge the level of enthusiasm for it from the local communities surrounding Scoop Hill Community Wind Farm.

Scoop Hill Community Wind Farm – Energy Fund

Since the original Section 36 application for Scoop Hill Community Wind Farm, in November 2020, global oil, energy, and food prices have risen dramatically. This has left households across the world and particularly in Scotland suffering through a cost-of-living crisis. Following the successful establishment of Community Windpower energy funds in East Lothian (East Lothian Energy Fund) and North Ayrshire (Dalry Parish Boundary Energy Fund) which will be elaborated on later in this CTC, CWL remains committed to the possibility of establishing another energy fund which would be available for residents in the vicinity of Scoop Hill Community Wind Farm, once the wind farm is fully operational and subject to the state of electricity and energy prices.

2. The Onshore Wind Policy Statement. Published by the Scottish Government in December 2022.



Pump Track

In a project led by local people and Moffat and District Community Council, supported by funding from CWL and the Holywood Trust, a pump track is proposed for construction on open ground in Hope Johnstone Park recreation ground in Moffat, Dumfries and Galloway. The track will be constructed using low maintenance asphalt, with berms and banked turns to generate speed for the cyclist using it.

During the development of the proposal, extensive public consultation took place to gauge support for the project. The project was discussed through social media channels such as Facebook and also discussed with members of Dumfries and Galloway Council and Moffat and District Community Council. The site was chosen out of a selection of options due to its accessibility and size, meaning it was the most accommodating option for the proposed pump track.

The positive feedback during the consultation period was substantial. Furthermore, a 'Day of Hope' event was held at Hope Johnstone Park in August 2021, attracting many young cyclists who tested out a modular pump track that had been installed temporarily in the proposed development area. Feedback from members of the public in Moffat was unanimously supportive of the initiative to create a permanent facility.

Importantly, CWL will provide funding for this project even if planning consent is not secured for Scoop Hill Community Wind Farm.



The picture above shows the area where the pump track will be constructed, in Hope Johnstone Park, Moffat.

Project Conclusion

Across all of its wind farm developments, CWL look to positively invest in, and become a part of, the local host communities for the lifetime of the project. While wind farms can bring a huge benefit in the battle against climate change and the production of clean green energy as we face a Climate Emergency, it is CWL's belief that it can also bring a huge benefit to the local host communities through a variety of other social and economic factors.

The development, construction and operation of Scoop Hill Community Wind Farm will:

- Generate over £1.8 billion of investment
- Support and create over 250 jobs during construction
- Facilitate economic growth locally, regionally and across Scotland
- Provide an £86.4 million community benefit fund which can support their local communities for current and future generations.

If positively supported and planning consent is approved, CWL is wholly committed to investing in and working with the local host communities to deliver a beneficial legacy for generations to come, thanks to the Scoop Hill Community Wind Farm.



250 jobs supported or created during construction	£1.8bn total investment generated	£86.4m in community benefits over 40 years
£2.16m in community benefits per annum	£5.4m in business rates per annum	£206m GVA generated across Scotland

A key ethos for CWL is the education and training of local children and young adults to provide them with knowledge and skills for the future. This in turn assists them with seeking employment and improving the socio-economic levels of the local area.

Through the '*Buy Scottish*' policy and working partnerships with a variety of companies and organisations, CWL will commit to supporting education and training resource requirements for residents of the local host communities for the lifetime of the wind farm, including:

- Partnering with primary schools, secondary schools, and colleges to provide educational workshops and career advice;
- Delivering unique opportunities by partnering with local organisations, such as Developing the Young Workforce Dumfries and Galloway (DYW D&G);
- Providing wind farm tours at its operational sites.

Commitment to Education

Working Partnerships with Primary Schools

CWL have a longstanding history of working closely with schools in the local host communities of its operational and in development wind farms.

CWL also deliver educational presentations to schools, based on topics such as renewable energy, energy efficiency awareness and sustainability, and is keen to support local schools who are trying to achieve Eco School Status and thus be more environmentally friendly.

With regards to Scoop Hill, CWL has already engaged with several of the local primary schools in Moffat, Lockerbie, Beattock, Johnstonebridge and Boreland providing educational workshops and presentations, trips to a wind farm, funding for IT equipment and the delivery of PE sessions by Let's Get Sporty. Looking to the future, CWL wish to engage even further with the local schools surrounding Scoop Hill Community Wind Farm, to create strong working partnerships and bring their educational benefits to a wider region.

CWL has signed a Memorandum of Understanding (MoU) with many primary schools located in the host communities surrounding their operational wind farms across Scotland. The MoU confirms its commitment to working with these schools for the lifetime of the wind farm by providing the following:

- Educational support to the school concentrating mainly on environmental topics and energy awareness;
- Financial support for educational trips and visits for the school to attend and participate in.

An example of the benefits of the MoUs, in March 2018, Sanquhar Primary School held a Gardening Day, and CWL provided the school with a number of CWL staff, equipment and funding to help the teachers and pupils to create and manage their school garden. CWL assisted in building a Wildlife Garden for the school grounds, planting flowers and vegetables, as well as building a willow dome, a bug hotel and the installation of composting bins.



Working Partnerships with Secondary Schools and Colleges



In January 2020, CWL signed a MoU with the Engineering Development Trust (EDT). Through this, CWL has agreed to provide support, both educationally and financially to the EDT. Specifically, CWL is to provide financial support for the funding of programmes coordinated by EDT, and educational support in the form of participating in EDT coordinated programmes such as the Go4SET.

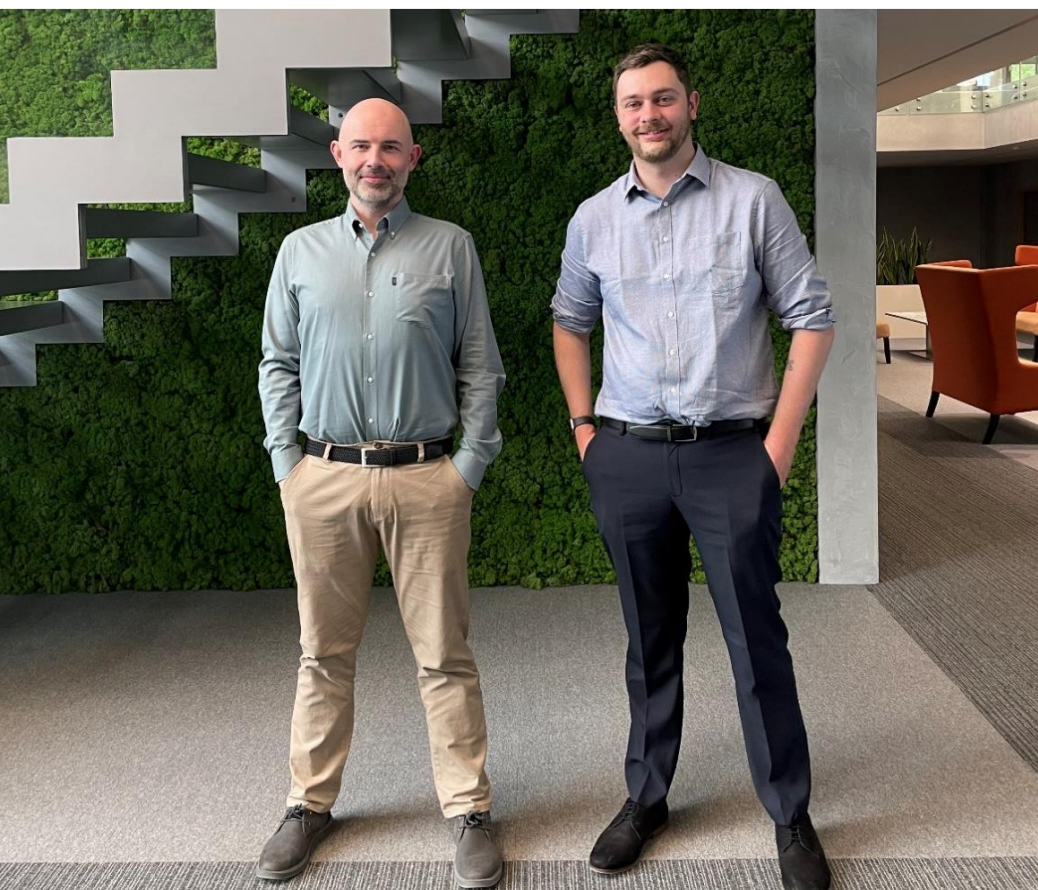
The Go4SET project is typically ten weeks long and offers young people in S1/S2 the opportunity to develop skills, inform subject choice and change perceptions about Science Technology Engineering and Maths, raising awareness of how studying these subjects can lead to a rewarding career.

Through the Go4SET, CWL employees also assisted those involved with their projects and offered advice about wind energy and renewable energy as a whole.

In conjunction with the company's operational wind farms in North Ayrshire, a long-term partnership has been established with West College Scotland and Ayrshire College that offers engineering students a two-week work placement with CWL, designed to teach both the 'Project' and 'Technical' aspects of the Company and its portfolio of wind farms.

The work placements are designed for students on engineering/electrical engineering courses who wish to pursue careers within the renewable energy industry. The placements cover different areas of the business, including working with live data from the operational wind farms and project development such as wind farm site design and constraints assessments.

Following the success of this partnership, CWL will look to establish a similar working partnership with Dumfries and Galloway College in Dumfries, in association with the proposed Scoop Hill Community Wind Farm to provide educational and employability opportunities.



Educational Presentations

Educational Presentations are also available for local groups and organisations. For instance, after school clubs, youth groups, local adult groups and any other community groups as desired by group leaders and members such as the Scottish Women's Institute and Scout/Guides Groups.

Topics for the presentations can be on any subject related to the environment and are not limited to wind energy, but can include all types of renewable energy sources, energy efficiency, climate change, recycling, the environment, sustainability and energy awareness.

CWL also offer career-related presentations, such as those delivered to students of Sanquhar Academy and Langholm Academy in Dumfries and Galloway in January 2023. This was in association with Developing the Young Workforce Dumfries and Galloway (DYW D&G), a government endorsed educational organisation which aims to improve the relationship between students and employers, by assisting schools and colleges in developing such partnerships and thus enhancing the employability skills of young people through educational workshops. As a result of this, CWL are seeking to form long-term working partnerships, through DYW D&G, with additional schools and colleges in Dumfries & Galloway.

Programme Manager at DYW D&G, Justin Thomas, commented that DYW D&G *"is delighted to be working closely with Community Windpower to inform our region's young people about this sector which will carry hundreds of them into exciting and prosperous careers"* through the successful educational presentations at Wallacehall Academy and D&G College.

Furthermore, he comments that CWL *"continues to build on its success, taking advantage of technological advances to ensure a continuous, sustainable industry for the future"* and will do so for Scoop Hill Community Wind Farm.

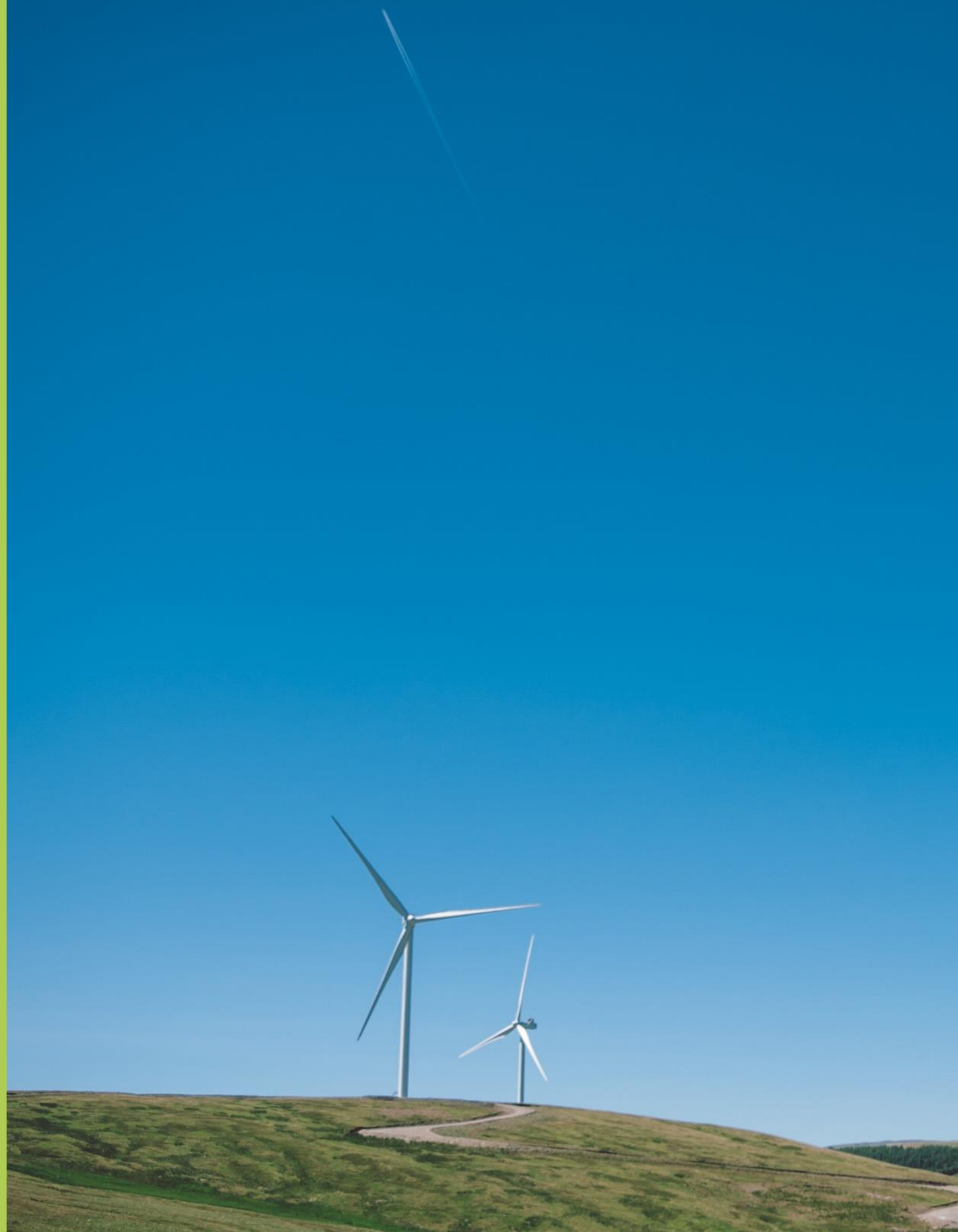
Following on from a careers presentation at Wallacehall Academy, a student from the Academy spent a day's work experience in December 2018 at CWL's Dalry and Millour Hill Wind Farms with the Operations Director, learning about the working of a wind farm and more about the Onshore Wind Industry. The hope is that the visit will aid the pupil in making a decision about their future career choices and employment.



Established Community Assets – Case Studies

Funding from CWL's eight operational wind farms has already contributed to the development of some outstanding assets within their local host communities. Since 2006, Community Windpower has provided over **£8 million in community benefits**.

Information on some of these community projects is provided below. They demonstrate that, by working together, local host communities can substantially benefit from the facilities and services that result from the development and operation of a CWL wind farm in their area.





Covid-19 £255,000 Crisis Fund

The Covid-19 pandemic was, by nature, a global issue, yet it had heavy impacts on Scotland's communities and citizens. In response to the crisis, CWL established a Covid-19 crisis fund, amounting to £255,000, to provide vital support for Scotland's communities and organisations. Speaking on the establishment of the fund, Diane Wood, Community Benefits Director at CWL, said: *"As we continue to live in such worrying and unprecedented times for everyone, it's vital we dig deep and help people in communities that are being negatively impacted by this Covid-19 crisis."*

The crisis fund helped in a myriad of ways. In some cases, organisations applied to the fund for funding to purchase items or equipment but for others, the financial assistance supported them in different ways. For example, a £2,500 donation to the Scottish Seabird Centre (pictured top left) was used to help create online learning activities for children and families, in the form of whiteboard animations, surveys, virtual rock pooling activities, and worksheets. At a critical time for the charity's future, the donation helped to bolster their finances when their boat trips and gift shop (the usual sources of income) were closed due to the coronavirus restrictions.

The fund also supported, amongst many other organisations and charities, Blood Bikes Scotland and Belhaven Surf Centre in Dunbar. As the NHS became strained under the weight of the coronavirus impacts, so did its essential services which occur outside the hospitals and health centres. Blood Bikes Scotland saw a 70% rise in the demand for their services, and approached Community Windpower for £3,500 in funding, at a time when undertaking normal fundraising became impossible.

CWL has had a close relationship with Belhaven Surf Centre for many years, previously supporting them with £10,000 to assist with the costs of constructing their community building, and £1,400 was allocated from the Covid-19 crisis fund to install hot showers and hygiene facilities which increased the amenity of the building when it was receiving many more visitors.

Community Windpower's Energy Funds

In more recent times, the world (and Scotland) is facing a cost-of-living crisis, one which particularly affects vulnerable and terminally ill people. During the recent winter months, the cost-of-living crisis became particularly pronounced, with rising energy bills and food costs meaning people have been forced to choose between heating their homes or feeding themselves or their families.

Established in December 2022, the East Lothian Energy Fund amounted to £1 million and, over the course of four months, over 1,400 vulnerable individuals and families were helped. It was a unique partnership between CWL, Advice Direct Scotland, and East Lothian Council. The fund provided flexible economic support in the form of direct payments to an individual's energy supplier, or cash-out vouchers to help them purchase essentials, keep food on the table, and keep their children adequately clothed for school. One East Lothian resident said that he had been keeping his thermostat at 10°C, and that the grant from the energy fund had helped prevent him from "freezing" that winter.

The strong uptake of the East Lothian fund inspired CWL to extend the scheme and has now established the Dalry Parish Boundary Trust Energy Fund in North Ayrshire. The Dalry Parish Boundary Trust was established in 2014 to administer and distribute the annual community benefit funding from CWL's Millour Hill and Millour Hill Extension Community Wind Farms, which have a combined annual benefit fund of £122,000.

The Dalry Parish Energy Fund amounts to £300,000, and households can apply for financial help with their energy bills if they are already in receipt of state pension, an occupant has a terminal illness, if an occupant requires electricity for medical equipment, if an occupant has a disability, or if they are a household with children living in poverty. In April and May 2023, the first two months of the Dalry Parish Energy Fund's duration, over £120,000 was distributed from the fund to over 270 households in the KA24 (Dalry) postcode.





North Ayrshire Foodbank

CWL have supported the Ardrossan-based North Ayrshire Foodbank since 2014, with donations totalling over £100,000. Throughout the duration of the Covid-19 pandemic, the volunteers at North Ayrshire Foodbank saw the demand quadruple for emergency food packs and pre-prepared meals. Funding from CWL enabled almost 20,000 meals to be prepared over the course of 14 weeks in 2020, and in 2022, CWL supported North Ayrshire Foodbank's summer 'Make A Meal of It' campaign which provided guaranteed meals for children attending summer clubs.

During the 2022 Christmas period, amidst the cost-of-living crisis which hit many Scottish households hard, CWL representatives and local volunteers in Dalry packed 250 hampers to be distributed over the holiday period. North Ayrshire Foodbank's Coordinator Craig Crosthwaite said: "It's absolutely fantastic that Community Windpower have once again been able to support this programme of support to the communities of North Ayrshire. No year has been easy, but this one has been particularly hard due to the current cost of living crisis. This support is not simply a festive treat, it's a lifeline for households".



North Ayrshire Girl Guides

Activity Centre

Utilising funding from Millour Hill Community Wind Farm, CWL provided a £100,000 direct donation to Girlguiding Ayrshire North for the construction of their brand-new Blair Activity Centre. An additional £15,000 was granted by the Dalry Parish Boundary Trust towards the supply and installation of a new kitchen in the Activity Centre.

True to CWL's 'Buy Scottish' policy, this project employed local architect James Harper from Lochwinnoch, and the appointed builders were Bridge of Weir contractors, H McMurray and Son. The Blair Activity Centre will provide a space for social activities and educational experiences for the Girl Guides, not just of North Ayrshire but from across Scotland. The activity centre will be used by young people for generations to come and will be an invaluable asset for communities in Dalry, North Ayrshire and beyond.

Betty Wilson, Guide Leader for the North Ayrshire Guides, shared her appreciation at the official opening on Saturday 18th August 2018:

"Community Windpower's donations and input should not be underestimated. Without them this would not have happened... North Ayrshire Guides can't thank the Community Windpower team and members of the Trust enough."

55th Dalry Scout Group

New Scout Hall

Millour Hill Community Wind Farm also pledged over £100,000 towards the demolition, redesign and rebuilding of Dalry Scout Hall for the 55th Dalry Scout Group which disbanded due to the dilapidated state of the old Scout Hut. The Scout Group has successfully reformed with an overwhelming number of local children attending the Beaver, Cub and Scout groups. A £20,000 grant was also provided by the Dalry Parish Boundary Trust to assist with the development.

Local North Ayrshire company J&S Builders were appointed to build the Scout Hall, in keeping with our commitment to 'Buy Scottish', retaining jobs and investment within the Dalry area. Now finished and fully operational, the Dalry Scout Hall is a welcoming and bright space for the community to utilise.

Dalry Group Scout Leader, Steven Horswell, has complimented the role Community Windpower have played in making this project a reality:

"None of this would have been possible without the huge financial donation and on-going support from everyone at Community Windpower. They have all been very supportive and helpful and we thank them for that."



£100,000 in
funding

£130,000+
contributed by CWL
over the course of the
regeneration project





Cockburnspath Village Shop

In 2020, residents of Cockburnspath, Scottish Borders, lamented the loss of their local community shop which had recently closed and left a gap in the village. In an effort to launch a new shop which is an essential service for young families and elderly people, local residents formed the Cockburnspath Community Enterprise Limited and fundraised £30,000.

CWL were the project's largest funders, providing a grant of £70,000 and the use of crane contractors to winch in the prefabricated structures. The shop is now fully constructed and thriving, providing groceries, key essentials, magazines, and local produce such as vegetables, hand-crafted items and gifts.

Richard Copland, Chair of the Community Shop Management Committee, said: *"It'll attract many new customers, as it offers something bespoke for tourists and walkers from the Southern Upland Way."*



Abbey St Bathans Village Hall Regeneration

In Abbey St Bathans, the community were in a similar need for a rejuvenated asset. In the Abbey St Bathans Community Action Plan, the 111-year-old village hall was highlighted as a key opportunity for regeneration. However, with a long list of building works required in order to completely rebuild the village hall, CWL provided a lump sum donation of £250,000; over the course of the ambitious project, CWL's total contribution amounted to over £300,000. Sensitive design and construction methods, including the safe removal of asbestos sheeting and the use of durable timber, means the village hall is now a modern, safe, and functional asset.

Diane Wood, Community Benefits Director at Community Windpower, said: *"This development is an exciting asset which provides a meeting place for the likes of locals, community organisations and young people after a difficult period during the Covid-19 pandemic. We trust that this new hall will be a great lasting legacy for Abbey St Bathans, one which can be enjoyed by all for many years to come."*



Upper Nithsdale Community Trust

As part of the community benefits for the operational Sanquhar Community Wind Farm, CWL are contributing £150,000 a year to the local host communities of Kirkconnel and Kelloholm and Sanquhar which will equate to £3.75 million for the 25-year lifetime of the wind farm. To ensure the funding is administered correctly and fairly between the host communities, the Upper Nithsdale Community Trust (UNCT) has been set up.

The Upper Nithsdale Community Trust will be responsible for administering and distributing funding to community groups, organisations and individuals who have completed grant application forms and associated paperwork and comply with the grant criteria.

Since Sanquhar Community Wind Farm became operational in 2018, CWL have donated approximately £750,000 to the Upper Nithsdale Community Trust. Amongst the donations made in 2019 was £29,000 to Sanquhar Community Council for play equipment for Lorimer Park, £14,800 to the Kirkconnel & Kelloholm Development Trust for equipment for an inclusive playpark & pathways and £1,880 was donated to The Mid & Upper Nithsdale Twirlers to purchase new tracksuits for the squad.



Beattock Primary iPad donation

Through a pre-development community benefit donation, CWL has been able to help children at Beattock Primary School and Nursery (located close to the proposed Scoop Hill Community Wind Farm) get improved access to electronic, online learning through the purchase and delivery of ten brand new iPads. The additional iPads will enable the pupils to make the most of digital technology and education.

Hazel Graham, Depute Head Teacher at Beattock Primary School, said: *“We’re not a big school with huge resources, but we have children who are always eager to learn and need technology to help them progress. When Community Windpower became aware of the situation and offered us a solution, the school and parent council were absolutely delighted. The new iPads will make a huge difference to the school and help the children reach their potential by using the educational programmes made available through Dumfries and Galloway Council.”*



Annandale Community Transport Services (ACTS)

Established in 1999 and operating in the Annandale and Eskdale area in south west Scotland, Annandale Community Transport Services (ACTS) provides a vital transport service that supports elderly people and people with disabilities. ACTS have built up a strong fleet of vehicles for this purpose, which can be used for medical appointments, shopping trips, and family visits. They also facilitate day trips to locations such as Edinburgh, Penrith, and Durham, providing people with a chance to visit Christmas markets, heritage locations, and popular shopping destinations.

CWL supported ACTS in March 2023 with a donation of £1,125 to provide clothing for their volunteers, ID cards, and a new printer for their main office in Lockerbie, Dumfries and Galloway. The clothing for the volunteers was purchased from a local company, Rostrum Sportswear Ltd, which is based in nearby Lochmaben. Janet Saunders, Manager and Company Secretary at ACTS, said: *“We are delighted to have received this funding. It is so important to our organisation to have this support so we can continue to provide our invaluable services to the local community”*.



Let's Get Sporty!

In a partnership that has been flourishing since September 2021, CWL's association with Dumfries-based community interest group Let's Get Sporty (LGS) has two aims: to provide free, fun sports sessions to students across Dumfries and Galloway, and to advance their knowledge of renewable energy and climate change through engaging workshops. These two aims work in tandem to boost the children's mental health and physical wellbeing, providing them with fun memories and shared experiences with their school friends.

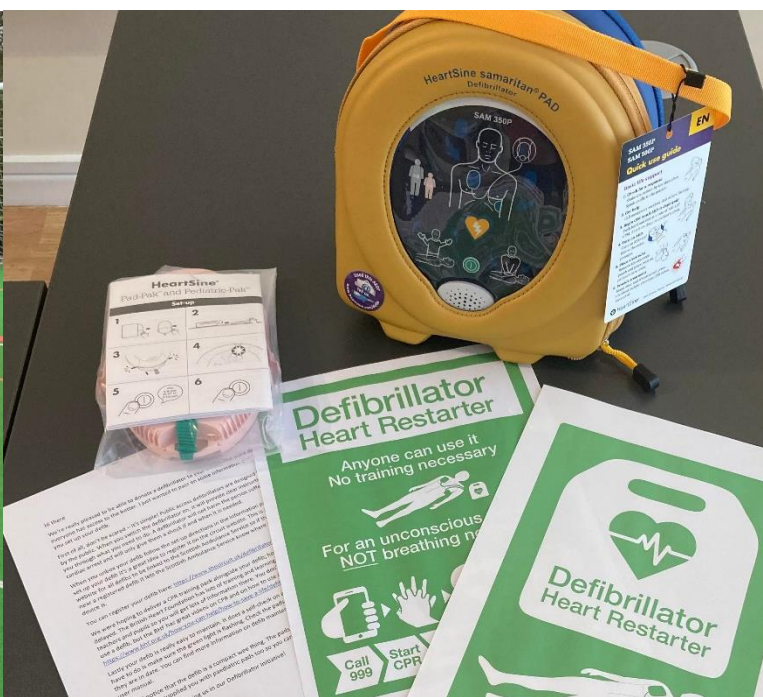
Across three 'phases', LGS have delivered a wide range of sport sessions, including rugby, hockey, tennis, netball, athletics, and many other games. In 2022 alone, supported by funding from CWL, LGS delivered free sport sessions to 1400 pupils in nine different schools across Dumfriesshire. Phase 3 began in early 2023, with over 360 primary school pupils from four schools in the Annandale area engaging with the sessions. In two of the schools, Applegarth Primary and Johnstonebridge Primary, after-school sessions were also made available. Without the provision of funding from CWL, which to date totals over £19,000, these schools would not have benefited from these highly valuable sports sessions.

David Bradbury, Managing Director at Let's Get Sporty commented *"Working together with Community Windpower we can boost the health and wellbeing of the children in this community through regular sports sessions. It is also an excellent opportunity to simultaneously build knowledge around the environmental and community benefits of renewable energy, incorporating sport and learning together"*.

CWL's Defibrillator Programme

In 2022, CWL launched an initiative to install life-saving defibrillator equipment and CPR training packs in six schools in the East of Scotland. CWL covered the cost of purchasing and installing the defibrillators, which now serve as assets within the community. As the defibrillators are registered with the Scottish Ambulance Service, in the unfortunate event of it needing to be used, the defibrillator's location can be made aware to the individual in need. Diane Wood, Community Benefits Director at Community Windpower, said: *"These next six defibrillators will provide a medical 'safety net' for people of all ages. Here at Community Windpower we are always geared towards helping our communities. In this case, we are making life-saving technology freely accessible."*

This initiative is an expansion upon two defibrillators which CWL has previously installed: in Dalry, North Ayrshire, and the other within their BeGreen shop in Dunbar, East Lothian. In Dalry, a man's life was saved by the defibrillator after he fell seriously ill in a Lidl supermarket; a quick-thinking shopper remembered that a defibrillator had been installed outside the BeGreen shop in Dalry, and it was deployed rapidly to preserve his life before he could be transferred to hospital by ambulance.





Conclusion

In conclusion, the development, construction, and operation of Scoop Hill Community Wind Farm will provide a multitude of benefits to its local host communities, households, businesses, and workforce. Aside from the creation of permanent jobs and the economic boost which local accommodation and businesses will receive over the lifetime of the development, the annual community benefit fund of over £2 million will be transformative for the communities of Eskdalemuir, Kirkpatrick Juxta, Moffat, North Milk, and Wamphray.

CWL have abundant experience with distributing community benefits, and ensuring that, where necessary, legacy projects are created which can benefit the host communities for generations to come. These legacy projects are not restricted to the construction of a community facility or building. They can be anything from:

- Education and sports programmes;
- Internship opportunities;
- Energy efficiency improvements;
- Energy funds;
- Or the purchasing of helpful technologies like iPads and life-saving defibrillators.

The proposed development will also promote improved access to recreation and nature, which is proven to boost mental and physical well-being, through wind farm walks across the expanse of the proposed development site. Through this CTC, the applicant presents that those of all ages in the surrounding host communities will see, feel, and experience the benefits which Scoop Hill Community Wind Farm will provide.

References

1. 'Economic Impact of Community Windpower's Scoop Hill Community Wind Farm', BiGGAR Economics. Published on the 10th February 2023.
2. The Onshore Wind Policy Statement. Published by the Scottish Government in December 2022.