



Website:  
greencentres.co.uk

green

Telephone:  
01368 863 720

FREE ENERGY ADVICE  
FREE ENERGY ASSESSMENTS  
GRANT ASSISTANCE • COMMUNITY FUNDING

Chest, Heart  
Stroke  
Scotland

Chest, Heart



## COMMITMENT TO COMMUNITIES

Scoop Hill  
Community Wind Farm

Established as an independent community  
focused company specialising in the  
development, construction and operation of wind farms.  
We are dedicated to energy, reducing carbon emissions  
and providing security.

BeGreen initiative to provide  
efficiency and small

**community windpower** **BeGreen**  
Pay Dalry Scout Group Date 07/09/2012  
One hundred thousand pounds £ 100,000.00  
Community Windpower  
Community Windpower Ltd  
& BeGreen



## CONTENTS

Introduction	3
Investment & Employment	4
Community Assets	8
Conclusion	16
Appendix: Community Asset Case Studies	17

## EXECUTIVE SUMMARY

This report provides information on Community Windpower's (CWL) Commitment to Communities initiative and is an accompanying document to the full S36 application for Scoop Hill Community Wind Farm, and should be read in conjunction with the full EIAR. This report has been compiled to give a more comprehensive insight to CWL's 'Buy Scottish' policy which **will support local businesses and generate in excess of 250 jobs.**

The report makes reference to **a range of options for innovative community based initiatives** and assets including; the development of electric vehicle (EV) charging points, support for training and business services, a multi-use wind farm walk for equestrians, cyclists and walkers and support for local schools and educational establishments. In addition, the development will also offer the **inclusion of a wind farm based 'Visitor Centre'** which would be designed in partnership with our neighbouring communities and delivered via a separate planning application.

These community-focused initiatives and assets have been derived through consultation and reviews of local action plans and consultee recommendations and would be actioned upon successful approval of the S36 application.

The potential for community assets is supported by the Scottish Government's Good Practice Guidance for Community Benefits (2019). CWL will continue to consult with communities and local groups throughout the planning process to agree upon the best assets and initiatives to be developed and implemented for their local communities. This Commitment to Communities report also refers to previous community assets which have been successfully delivered to local host communities by CWL at their already operational wind farms. This demonstrates their successful track record and ability in delivering community assets which has included the construction and completion of community buildings, through to educational support, training and job creation.

CWL believe the proposed Scoop Hill Community Wind Farm, which **will generate more than £1.8 billion of investment**, can act as a catalyst for business growth, increased employment and tourist diversification, the combination of which will create a long lasting legacy **benefiting local residents, businesses and visitors.**

**250+**  
Jobs generated

**£1.8bn**  
of investment

Increased  
tourism &  
business  
growth

# INTRODUCTION

This Commitment to Communities (CTC) report has been prepared by CWL to accompany the full S36 application for Scoop Hill Community Wind Farm, situated in Dumfries and Galloway, approximately 5km south east of Moffat and 11km north east of Lockerbie, as shown in Figure 1.

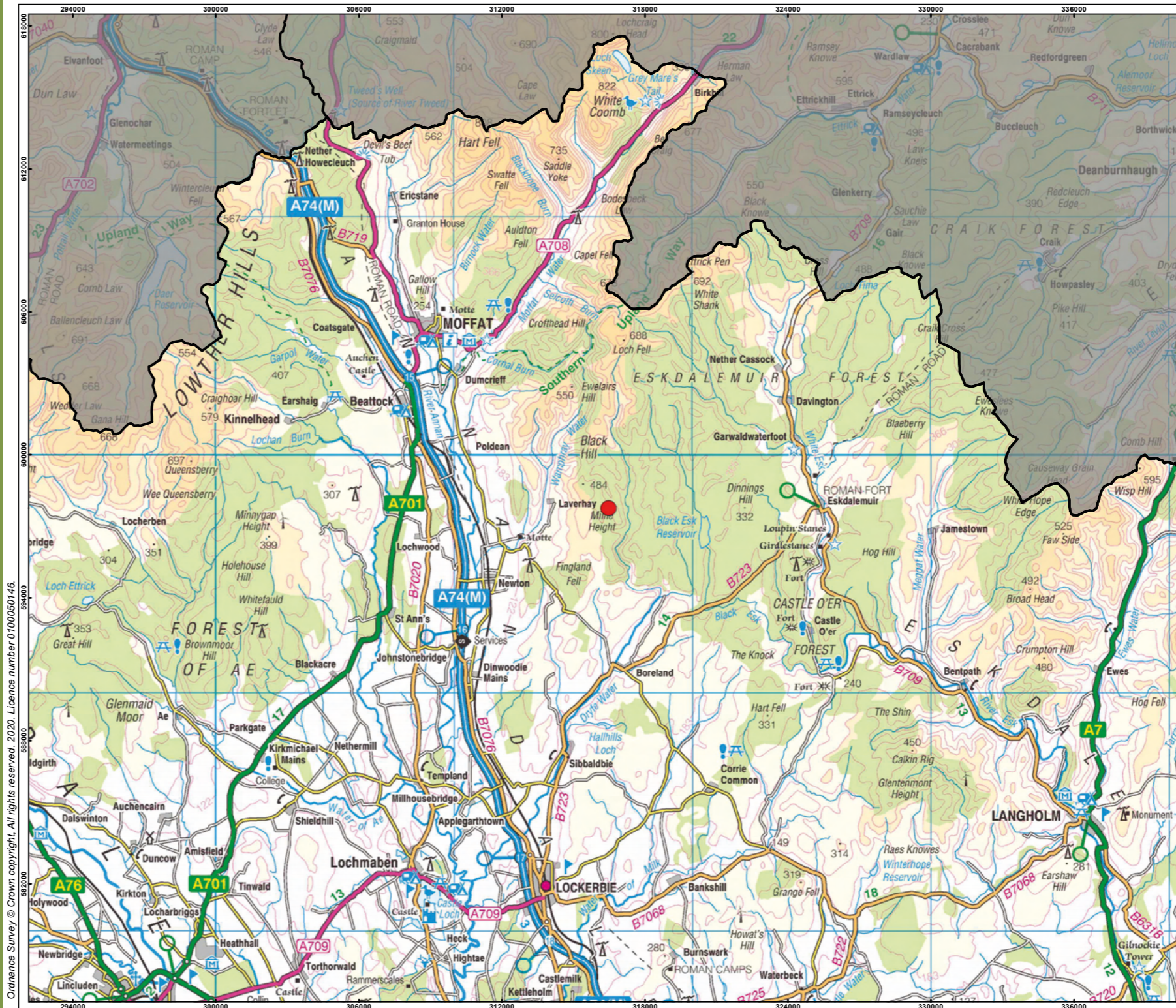
This report details CWL's 'Buy Scottish' policy as well as the further community focused commitments being made to the local area and host communities through the planning, construction and operation of the proposed Scoop Hill Community Wind Farm.

Details regarding economic investment, employment and educational opportunities and the community assets to be provided throughout the project, are included in this report as well as within the Environmental Impact Assessment Report in Section 5: Socio-economics, Population and Community Involvement.

# PROJECT DESCRIPTION

Scoop Hill Community Wind Farm comprises of 75 wind turbines, associated infrastructure and energy storage facility. The wind farm will be capable of generating 525 Megawatts (MW) of clean electricity each year of operation. This is enough electricity to power the equivalent of 572,000 homes every year.

The project will also help deliver the Scottish Government's ambitious targets for reducing carbon emissions by saving 931,000 tonnes of CO<sub>2</sub> each year, equating to over 37 million over the 40 years of the project.



**374 Scoop Hill**

**Legend**

- Site Location
- Dumfries and Galloway Boundary

Notes:  
Central coordinates for the site are: 316498, 596716  
Revisions: N/A

0 1,500 3,000 6,000 m  
Scale: 1:150,000 @ A3

**Figure 1: Site Location**

Date: 10/06/2020      Ref: 374-200610-7318  
Produced: DW      Reviewed: RE      Approved: GC

**community windpower**  
Godscroft Lane  
Frodsham - WA6 6XU  
t: 01928 734544 f: 01928 734790  
e: info@communitywindpower.co.uk w: www.communitywindpower.co.uk

## COMMUNITY WINDPOWER LTD (CWL)

Formed in 2001, Community Windpower (CWL) is a Scottish-focused, independent, UK renewable energy company. We work closely with local communities to build onshore wind farms that can provide tangible economic, educational and environmental benefits to whole communities and local schools.

CWL believe in an open and consultative approach with our host communities during the development stage of a wind farm project and during all stages of the planning process. By learning from our

development, construction and operation of medium scale wind farms in Scotland, we have been able to use our extensive knowledge and experience to design sites that are sympathetic to local landscapes and can provide generation to meet local and Scottish energy needs.

Since the operation of our first wind farm in 2006, we have been dedicated to providing meaningful community benefits to our local and host communities. As of August 2020, we had provided £5 million of community benefits, across our seven operational wind farms, in Scotland.

CWL has provided

# £5m

of community benefits across its 7 wind farms

## INVESTMENT AND EMPLOYMENT

CWL takes its commitment to communities very seriously. Through direct investment, our 'Buy Scottish' policy, Memorandum of Understandings with Scottish companies and indirect investment, **CWL is committed to ensuring that the communities surrounding the site benefit from the development.**

In addition to the material community benefits that CWL will offer, short-term and long-term employment benefits will also be provided both directly and indirectly.

The following pages demonstrate in more detail how the investments will be made and detail the employment opportunities provided by the development.

## PROJECT INVESTMENT

Significant investment has already been injected into the Scottish economy during the design and development of Scoop Hill Community Wind Farm. CWL works with Scottish-based consultants and services for ecological, archaeological, hydrological, landscape and visual, legal, meteorological and architectural works that have gone into creating the Environmental Impact Assessment Report (EIAR) submitted for this application.

It is estimated that approximately £530 million will be invested to develop and construct the wind farm. Further details of investment are provided in Section 5: Socio-economics, Population and Community Involvement.

**During its 40-year operational life, Scoop Hill Community Wind Farm is expected to deliver a total investment of more than £1.8 billion, which will benefit both local and regional economies.** This will include business rates to Dumfries and Galloway Council (DGC) of circa £6.65 million per annum as well as, operations and maintenance costs of the turbines, rents, electrical grid connection costs, general site maintenance costs and the permanent employment of staff in terms of wind turbine technicians and site maintenance staff.

In addition to this significant investment, CWL also pledges to support our neighbouring communities with an annual community benefit fund of £500,000. This will be paid throughout the life of the wind farm and equates to £20 million over its 40-year operational life. The fund will be made available to the communities of Eskdalemuir, Johnstonebridge, Kirkpatrick Juxta, Moffat, North Milk and Wamphray.

£530M

Development and construction

£20M

of community benefits

£6.65M

Business rates each year to DGC



## CWL'S 'BUY SCOTTISH' POLICY

CWL is committed to working with local businesses in the area surrounding Scoop Hill Community Wind Farm to create a project that is mutually beneficial.

As part of this, CWL will be implementing its 'Buy Scottish' policy. This policy was set up and designed so that economic investment from wind farms during development, construction and operation is made directly into the local area surrounding the wind farm, the wider region and within Scotland. The delivery of this project will generate substantial economic investment to businesses with priority given to those businesses and workers located closest to the development site.

Since 2006, CWL has invested more than £375 million for its seven operational wind farms located in Scotland. This will increase to £625 million by 2023 and £1.5 billion by 2025. Therefore, the 'Buy Scottish' policy is immensely valuable and important to Scotland in terms of boosting and building the local, regional and national economies. Below are details of some 'Buy Scottish' case studies; CS Wind UK and AMD Contract Services.



CWL has a long-standing relationship with Glasgow-based civil contractor RJ McLeod.

RJ McLeod has worked on many of CWL's projects and were recently commissioned as the main civils contractor for the construction of Aikengall Ila Wind Farm in Scottish Borders.

Bruce Clark, RJ McLeod's joint managing director said:

***“We're delighted to secure this significant contract with Community Windpower and continue the good relationship we've had since building its first wind farm project in North Ayrshire in 2006. We look forward to jointly delivering this important energy asset.”***



Dumfries-based AMD Contract Services Limited constructed 14km of access tracks for CWL's Sanquhar Community Wind Farm. They took on the main civil works contract for the project (with a contract value of £2 million), enabling them to take on additional staff and apprentices from the local area during the construction period, as well as training local people with valuable skills. With the skills gained from the construction of Sanquhar Community Wind Farm, their new employees were able to go on and get involved with further wind farm construction work, including CWL's Millour Hill Extension Wind Farm in North Ayrshire.



CWL has been in partnership with CS Wind UK of Campbeltown, Argyll and Bute since 2005, and is committed to sourcing Scottish-made steel turbine towers for our wind farms.

Turbine towers have been purchased from CS Wind in Campbeltown for the majority of the company's operational wind farm for example, the nine turbine towers for Sanquhar Community Wind Farm, were secured early in order to help fill a production gap in CS Wind UK's work programme at the Campbeltown plant.



## INDIRECT INVESTMENT IN LOCAL FACILITIES AND SERVICES

Throughout the development process of Scoop Hill Community Wind Farm, employees of CWL, contractors and consultants have all 'indirectly' invested in and utilised local facilities during regular visits to the area, including Bed and Breakfasts, shops, cafés and fuel stations, spending money within the local area. This spend will continue throughout the duration of the planning process, construction and 40 years of operation.

There will be continued 'indirect' financial expenditure into the local area from the construction and operation of the wind farm due to the following:

- Construction staff will be in the area for approximately 18 months;
- Staff from CWL and those working on behalf of CWL have regularly visited the site over the development phase and will continue to do so during the construction phase. Once operational, they will continue to visit the site to monitor the turbines and wind farm operations;
- Staff will also host/attend community events in the local area, and this will continue for the life of the wind farm (40 years);

Further details of the specialists and services employed to assist with Scoop Hill Community Wind Farm can be found in Section 5: Socio-Economics, Population and Community Involvement of the EIAR.

## EMPLOYMENT OVERVIEW

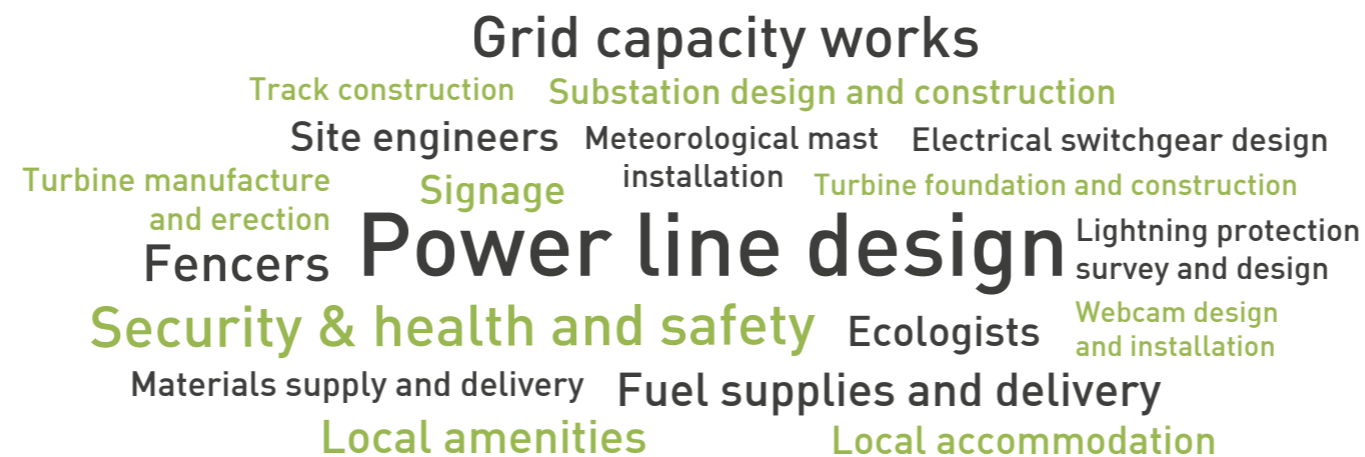
During the construction phase, Scoop Hill Community Wind Farm would support over 250 jobs across the construction and building supply industry. The wider employment benefits can be found below.

CWL will invite numerous Scottish civil, electrical and engineering contractors, to tender, with preference being given to companies based in Dumfries and Galloway, as well as companies who are willing to invest within the local area through expenditure and investing in the local people. This is another element of the 'Buy Scottish' policy and we have been very proud to appoint many local civil and electrical companies to work on and build our wind farms. As demonstrated through the construction of Sanquhar Community Wind Farm, three Scottish contractors were employed – AMD Contract Services of Dumfries, Collett, based in Grangemouth and Windhoist, based in Irvine.

The 'Buy Scottish' policy invitation to tender for Scottish civil, electrical and engineering contractors ensures they are informed of the various contract and business opportunities the development presents, which in the long run safeguards jobs and investment within Scotland. Through the policy, a 'Meet the Buyer' event will be held to promote the construction work opportunities and to encourage local companies to register their details in preparation for the tendering process.

**Once operational, Scoop Hill would provide up to 11 new jobs in the area**, in the form of six wind turbine technicians and one supervisor engineer to maintain and manage the wind turbines during its operational phase and four maintenance staff to maintain the wind farm site and undertake habitat management work as required. These jobs will have a lifespan of 40 years.

## CONSTRUCTION OPPORTUNITIES



**11**  
permanent full time jobs created



## TRAINING AND DEVELOPMENT OF THE WORKFORCE

CWL will afford more weight to a company's tender proposal should apprenticeships and additional training be offered as part of their tender application. CWL will request that the appointed civil contractor takes on and fully trains a minimum of six apprentices, with preference given to people from the local area, and then from the wider Dumfries and Galloway region. Further information on this, along with our work with local colleges and schools is detailed in Appendix 1. Supporting the education, training and careers of the younger generation is a key aim of CWL.



## OPERATIONAL EMPLOYMENT OPPORTUNITIES

Through the operation of the wind farm, we will tender wind farm related maintenance works to local companies and are currently discussing with Developing the Young Workforce (DYW) Dumfries and Galloway, about apprenticeships and employability of the local population.

Due to the proposed size of the development and from our experience of operating other wind farm developments, it is anticipated that general site maintenance works would be required throughout the year, and for the entirety of the 40 year operational phase, on a wide variety of tasks and responsibilities.

While maintenance will be required on the civil aspect of the scheme such as pot-hole repairs to access tracks and hardstands, fencing, gates and cattle grid inspections; maintenance will also be required on the environmental and ecological aspects such as habitat improvements, watercourse crossings and culverts and other assets such as newly planted trees and shrubs. Therefore, there are opportunities for local contractors to tender for works maintaining such assets throughout the lifetime of the wind farm.

Other jobs required as a direct result of the wind farm will include the need for communications maintenance. All of our operational wind farms have the ability to be monitored remotely, therefore there is becoming an increasing need for a communications expert to be available to maintain the company's operational communicational assets. This may mean a local, Scottish based employee will be taken on to cover the operational aspect of the site communications at Scoop Hill and our other operational wind farms.

As part of site Operations and Health & Safety, all of the Company's operational wind farms are managed through Natural Power's Operational Control Centre based near Carsphairn. Once built and commissioned, Scoop Hill will fall under the same remit, and 24-hour work control will be required for the site, meaning the potential for further staff to be recruited by Natural Power to cover the operational asset.

Throughout the wind farms operational lifetime, CWL will look to aid with creating jobs, whether directly or indirectly from the wind farm, with preference always given to local people.



# COMMUNITY ASSET PROPOSAL

CWL are wholly committed to fulfilling community obligations once planning permission has been obtained. We will work closely with our local host communities to provide significant economic, educational, environmental and social benefits for the lifetime of the wind farm.

CWL is liaising with Community Councils, Local Development Groups, Local Residents, and other local organisations for suggestions on how Community Assets can not only benefit the local communities, but enhance the local area, potentially bringing jobs and money into the local communities.

Dumfries and Galloway Council continues to face huge challenges with more budget cuts expected over the next three years.

Scoop Hill Community Wind Farm can help offset this budget shortfall as it will not only provide more than £6 million of business rates per annum to Dumfries and Galloway Council.

A review of the Community Action Plans and other documents prepared by Johnstonebridge, Moffat & Beattock, Eskdalemuir and North Milk Community Councils has concluded that there are far reaching wide issues relating to the provision of local services and facilities.

Table 1 sets out the findings of this review. A number of notable issues appear to be most problematic, these are:

- Community Sports/Youth Clubs;
- Outdoor Sports & Learning Areas;
- Adequate broadband;
- Support for training and businesses;
- Affordable Housing.

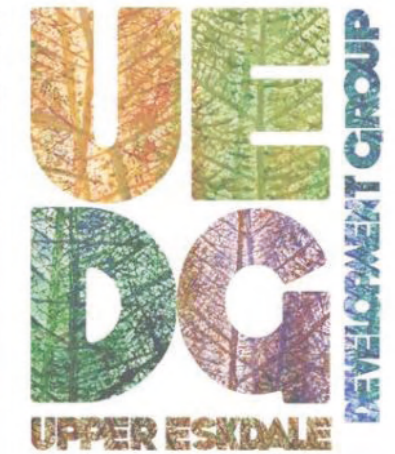
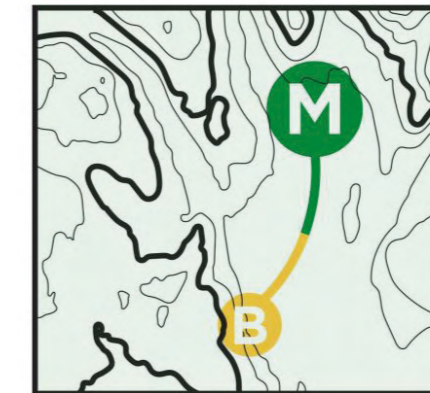
Table 1

Category	Deficiency	Johnstonebridge	Moffat	Eskdalemuir	North Milk
Roads & transport	Poor cycle lanes with faded signs	■			
	Only one pedestrian crossing		■		
	Lack of local train station				
	Poor public transport system			■	
	Travel issues for local road users				■
Community	Lack of after school activities	■			
	Poor parking at community centre				
	Closure of the local surgery				
	No affordable and family housing	■	■		
	Lack of wheelchair access at the only shop	■			
	No homes for the elderly		■		
	Lack of funding for community sports and youth clubs		■		■
	Lack of Indoor community spaces		■		
Outdoors	Lack of public services				
	Community hub has limited opening times space				
	Opportunity to build a park area	■			
	Path and sign network need upgrading	■			
	Lack of outdoor learning and sports area	■	■		
Jobs and business	Poor broadband facilities			■	■
	Lack of support for small & new businesses. Economy is dominated by low wage jobs and tourism	■	■	■	
	No advertisement space		■		
	Limited opportunity for young people to work		■		
	Lack of link between tourism on the outskirts and the town centre		■		
Tourism	Poor visitor facilities		■		
	Derelict buildings on popular tourist route		■		
	Lack of marketing strategy		■		

During community consultation, CWL have mentioned the following as possible initiatives and assets to be developed through Scoop Hill Community Wind Farm:

- Broadband;
- Developing the area for tourism by promoting cycling, hill walking and horse riding in the local area;
- Creating employment and apprenticeship opportunities within local job markets;
- Outreach education programmes;
- Upskilling young adults;
- Improved public transportation.

## MOFFAT AND BEATTOCK COMMUNITY ACTION PLAN

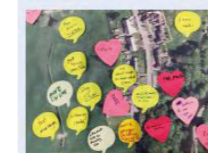


December 2016



Upper Eskdale Development Group Business Plan & 5 Year Trading Forecasts

# JOHNSTONEBRIDGE COMMUNITY ACTION PLAN





## ELECTRIC VEHICLE (EV) CHARGING POINTS

In the recent feasibility study 'Switched on Towns & Cities', commissioned by Transport Scotland, The Energy Savings Trust (EST) assessed the likely increase in infrastructure required (within the Dumfries and Galloway Area) to meet projected EV demand and stimulate uptake of EV technology. The study aims to assist the Scottish Government meet its ambitious targets for the electrification of transport, more specifically to have 20 'electric towns and cities' in Scotland by 2025 and phase out the need for new petrol and diesel vehicles by 2032.

The report shows that there will continue to be a strong demand for an expansive, fit for purpose, public charging EV network.

The report states 'it is vital that Dumfries and Galloway continues to expand the charging network in its area to ensure it meets the needs of these drivers, as not doing so may hamper future EV uptake'.... 'Dumfries and Galloway Council therefore has a great opportunity to play a crucial part in helping Scotland to tackle the climate emergency.'

The study points out that in 2019, the current level of provision is not on a scale sufficient enough to support the government's move to a petrol and diesel free world and also may be a factor in deterring local people from switching to electric vehicles.

CWL can commit to supporting Dumfries and Galloway's expansion of EV charging points in publicly accessible areas.

Up to  
**70%**  
of new car sales to be  
ultra-low emission  
by 2030

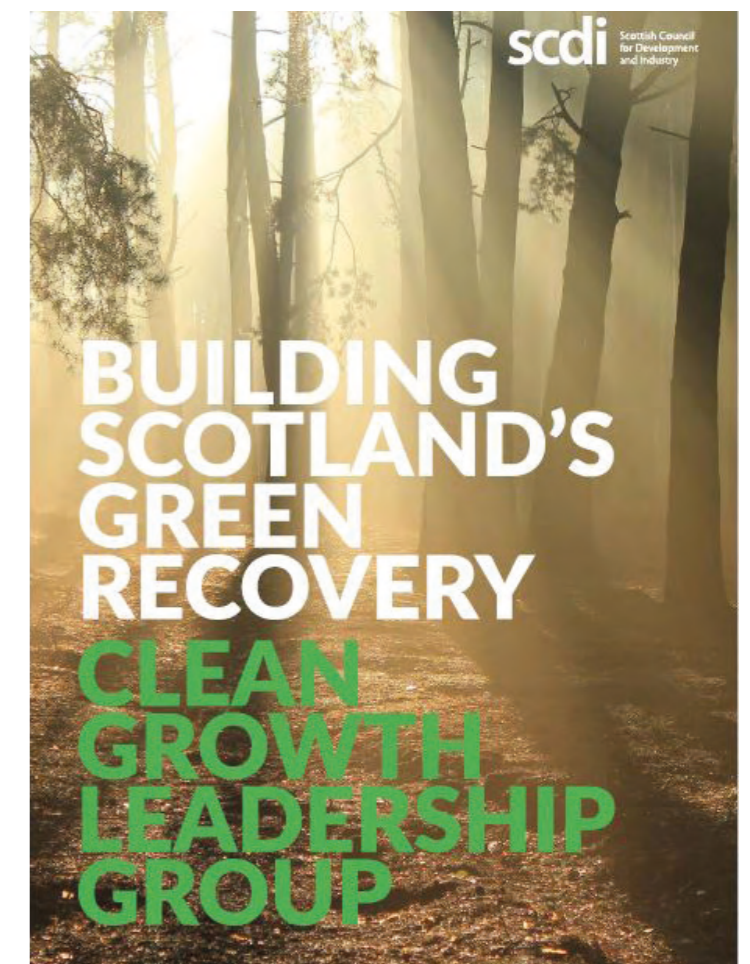
Petrol and diesel  
cars are to be  
phased out by  
**2032**



## ENERGY EFFICIENCY IMPROVEMENT GRANTS

The Scottish Council for Development and Industry (SCDI) has developed a plan for Scotland's Green Recovery from the COVID-19 crisis. The report 'Building Scotland's Green Recovery' sets out measures that will kick-start the Scottish economy, create new green jobs and accelerate Scotland's progress to net-zero carbon. It recommends that Scotland's green stimulus package should include new or expanded national programmes of investment in 'domestic buildings retrofit and energy efficiency' and 'domestic buildings heat pumps'.

CWL will therefore be offering a grant up to £1,000 to support retrofitting energy efficiency improvements to domestic properties located within our host communities.



## COMMUNITY BROADBAND

Many residents local to the proposed wind farm suffer from poor broadband connections, which can contribute to residents' social exclusion as they are unable to access job postings, project updates or information about local events or services which are advertised on the internet. For these reasons, it has been identified that the local area could benefit from a community broadband project.

An initial feasibility study assessing the potential to deliver faster and more reliable broadband to residents in the areas surrounding the proposed site will be conducted by experts on behalf of CWL. This will determine if the delivery of a community broadband project is technically feasible.

Following the results of the feasibility study, a further desktop survey will be conducted, including a geographical survey which can identify areas to locate infrastructure in order to secure an internet connection for the surrounding area. The survey will also establish the additional construction which will be required to deliver the broadband project.

If the project is practically feasible, we can commit to moving forward with the community broadband project. The next steps after the feasibility study will involve consulting with residents to determine which households require internet connection and are interested in participating in the project and, following this, a full engineering survey will be conducted at the interested properties.



## TRAINING AND BUSINESS SUPPORT

CWL can fund apprenticeships for local young people, which will be aimed at developing the skills and knowledge required for employment in Dumfries and Galloway's emerging sectors, including the creative industries, renewable energy and forestry sectors.

CWL would work in liaison with local schools and colleges, as well as other groups such as Developing the Young Workforce (DYW) Dumfries and Galloway, to assess the feasibility of delivering these apprenticeships, and identify the level of interest from both students and potential partners to deliver the apprenticeships.

Justin Thomas, Programme Manager at DYWDG said that:

***“DYWDG is delighted to be working closely with Community Windpower to inform our region's young people about this sector which will carry hundreds of them into exciting and prosperous careers through the successful educational presentations at Wallacehall Academy and D&G College.”***



## COMMUNITY SPORTS AND YOUTH CLUBS

CWL believes that access to and participating in youth sports is an important part of growing up. Social interaction and physical activity are essential for healthy and balanced development and community youth and sports clubs provide many opportunities for a physically active social interaction. Supporting the wellbeing of the younger generation will ultimately help a community's future.

Furthermore, providing a positive outlet where children can spend their free time in a safe and entertaining environment can also help relieve boredom and avoid antisocial behaviour.

It is for these reasons that CWL regularly supports community sports and youth clubs. To date CWL has already donated more than £250,000 supporting the Girlguiding Ayrshire North for the construction of their brand new Blair Activity Centre, the renovation of the Dalry Scout Hall for the 55th Dalry Scout Group and the securing of planning permission for the all weather 3G pitch at Sanquhar to be used for multi-activities by Sanquhar Academy, sports clubs and local groups (project cost of £1million). In addition to this CWL sponsors many local sports teams and individuals to provide sports kits, training kits and other vital equipment. Further details on these projects are provided in the appendix of this report.

Dalry Rovers Girls Football Club manager, Robbie McInnes, said:

*“The wonderful donation of £1,400 purchased new jackets and training kit for every player and helped the girls feel part of a proper team. There is great spirit in the squad right now and I can't thank DPBT and CWL enough for the grant. Running a team is an expensive business and although we do our own fundraising this kind of money makes a huge difference.”*



# MULTI-USE WIND FARM WALK

A preliminary assessment of the outdoor sporting and leisure opportunities that the development site could generate has been undertaken. These include the creation of a 'multi-purpose wind farm walk', which would pass through the Scoop Hill Community Wind Farm site area, linking to other nearby walking routes including core paths, the Southern Upland Way, the Romans and Reivers Way and other rights of way. This walk could provide families, walkers, equestrians and cyclists with the opportunity to explore the wind farm in a safe and managed environment, whilst also enabling them to complete new circular walks or access different routes that they previously couldn't.

The walk could include information/display boards at suitable locations along the route, displaying facts and figures about the turbines, flora and fauna, route maps, local heritage, along with health and safety guidelines as the walk would be situated on an operational wind farm and commercial forestry plantation.

Furthermore, since there are several important cultural heritage assets, both within and surrounding the proposed site boundary, the walk could be designed to incorporate and promote local historic features and monuments, in order to encourage tourism and knowledge of the history of the local area.

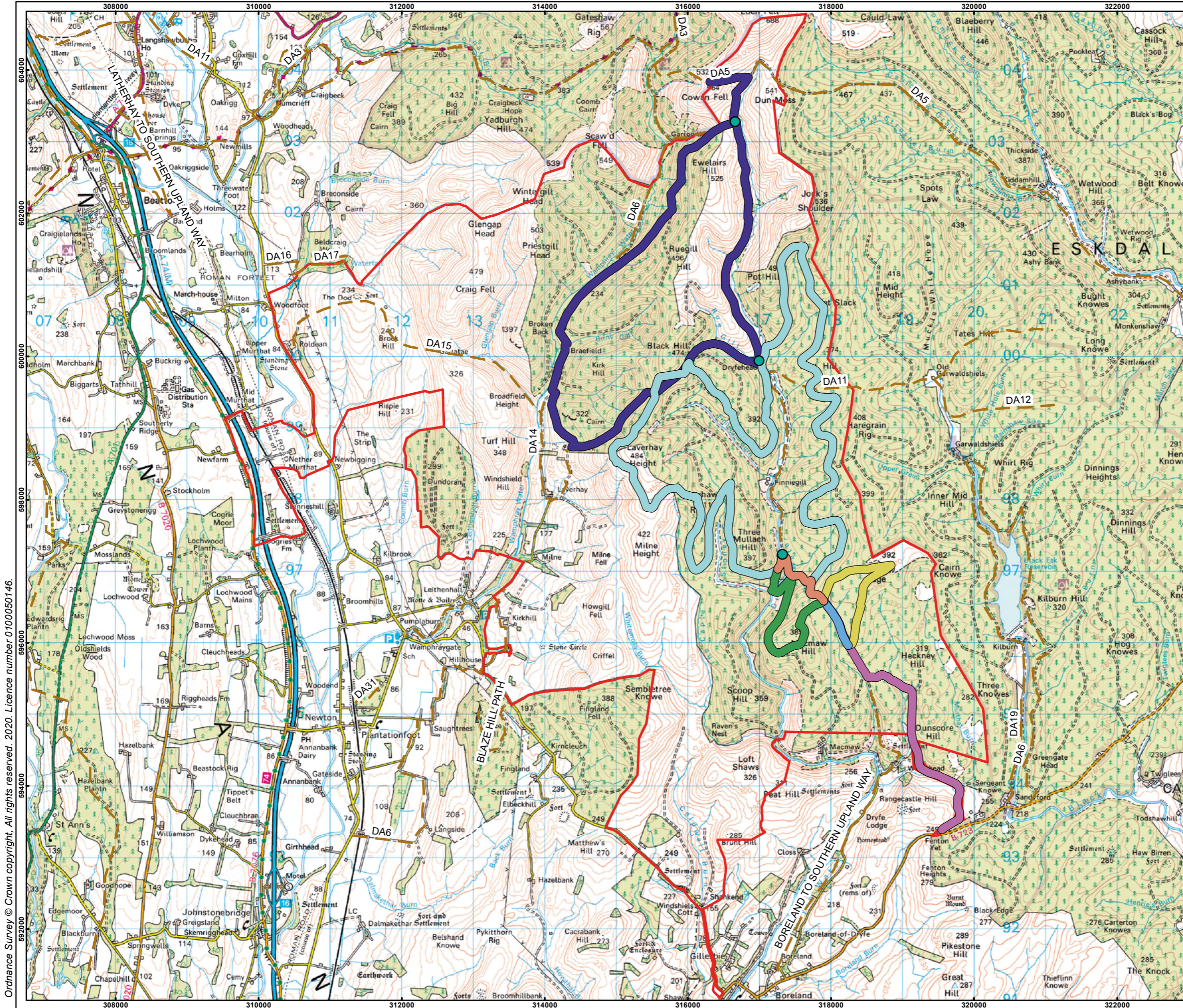
The multi-use wind farm walk could also be designed to link up with other core paths in the area. For example, the Cowan Fell to Craik Cross Hill Core Path located north west of the site boundary is a South of Scotland Countryside Trail, part of the old Roman road from Eskdalemuir to Craik and is suitable for walking, cycling and horse riding.

The following map displays five potential routes for multi-use paths and the corresponding information board locations. Table 2 displays the route description, including the starting points, lengths and the links to existing paths and rights of way.

**Table 2**

Route	Starting point	Distance	Links to other paths
Route to Visitor Centre	North east of Boreland	4km	Can get to this path via Boreland to Southern Upland Way path
Route A	Visitor Centre	4km	Just uses CWL upgraded tracks
Route B	Visitor Centre	20km	Just uses CWL upgraded tracks
Route C	Southern Upland Way to the north of the site	15km	Links to a core path from Boreland to the Southern Upland Way
Route D	Visitor Centre	3km	Just uses CWL upgraded tracks



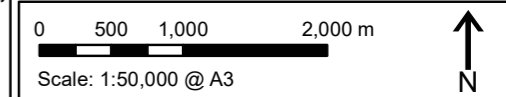


# 374 Scoop Hill

## Legend

- Site Boundary
  
- Potential Wind Farm Route**
- A
- A & B
- B
- C
- D
- D & Route to Visitor Centre
- Route to Visitor Centre
- Potential Notice Board Locations
- Core Paths & Public Rights of Way

Notes: N/A  
 Revisions: N/A  
 Layout: 374-191212-9018



## Potential Multi-Use Wind Farm Path Routes

Date: 10/06/2020      Ref: 374-200610-7319-B  
 Produced: DW      Reviewed: RE      Approved: GC

**community windpower**

Godscroft Lane  
 Frodsham - WA6 6XU  
 t: 01928 734544 f: 01928 734790  
 e: info@communitywindpower.co.uk w: www.communitywindpower.co.uk

## SCOOP HILL VISITOR CENTRE

In addition to the creation of the multi-use wind farm walk, CWL could also establish a Visitor Centre and employ a Scoop Hill Community Wind Farm Ranger, who will provide learning and support services to visitors, including groups of school children on organised trips, and families.

The Visitor Centre would be subject to a separate planning application and associated community consultation. Upon gaining planning consent, it would be delivered as part of the proposed wind farm secured via a legal agreement tying it to the wind farm application.

The Visitor Centre would be built with sustainability and the environment at the forefront of its design. This could include the electricity used at the centre being sourced from renewable energy, for example solar or the wind farm itself. In addition, double glazed windows, smart thermostats, sheep's wool insulation and water recycling could be implemented with the design of the building to ensure it is fully sustainable.

The Visitor Centre offer a range of onsite facilities:

- Information centre offering brochures, maps and information about the site, walking routes and the surrounding area;
- A sustainable and safe outdoor playground and trim trail;
- Educational support services focusing on the environment, climate change and renewable energy;
- Indoor and outdoor classrooms/activity bases where workshops, educational programmes and training courses could be delivered;
- Wi-Fi;
- Café and Gift shop; and
- Toilets.

The Visitor Centre would be supported by employed staff who would deliver and support walking tours of the wind farm, school trips, and environmental university courses.

CWL recognises the importance of tourism to the local economy and could therefore also introduce leisure and recreation facilities in partnership with other businesses or local organisations in the form of:

- Mountain bike hire;
- Electric quadbike/Segway hire;
- Eco Pods;
- Equestrian facilities; and
- High ropes.

The Visitor Centre and all associated services would be managed and delivered by local independent businesses and would make a valuable contribution towards local tourism and to supporting the local economy.

The idea of a Scoop Hill Community Wind Farm Visitor Centre is drawn from the success of the Whitelee Wind Farm Visitor Centre. Whitelee Wind Farm, on Eaglesham Moor in East Renfrewshire (Europe's second largest wind farm), has become an eco-tourist attraction aided by the construction of its own Visitor Centre on-site, which is managed by Glasgow Science Centre. The exhibition and education centre includes interactive displays such as 'build your own wind farm' which is aimed at helping people understand how the turbines work (Scottish Renewables, 2016).

Open since 2009, the visitor centre, received its 500,000th visitor in 2016. The area had not previously attracted much tourist attention, so the visitor figures for Whitelee are particularly impressive. As a result, Whitelee became the first wind energy project to join the Association of Scottish Visitor Attractions. (Scottish Renewables, 2016).

The development of a Visitor Centre with associated leisure and educational facilities could open up both the wind farm and the local area to increased tourism benefiting local businesses directly and indirectly, as an increased number of visitors may mean more money is spent locally on accommodation, food and drink, and other amenities.

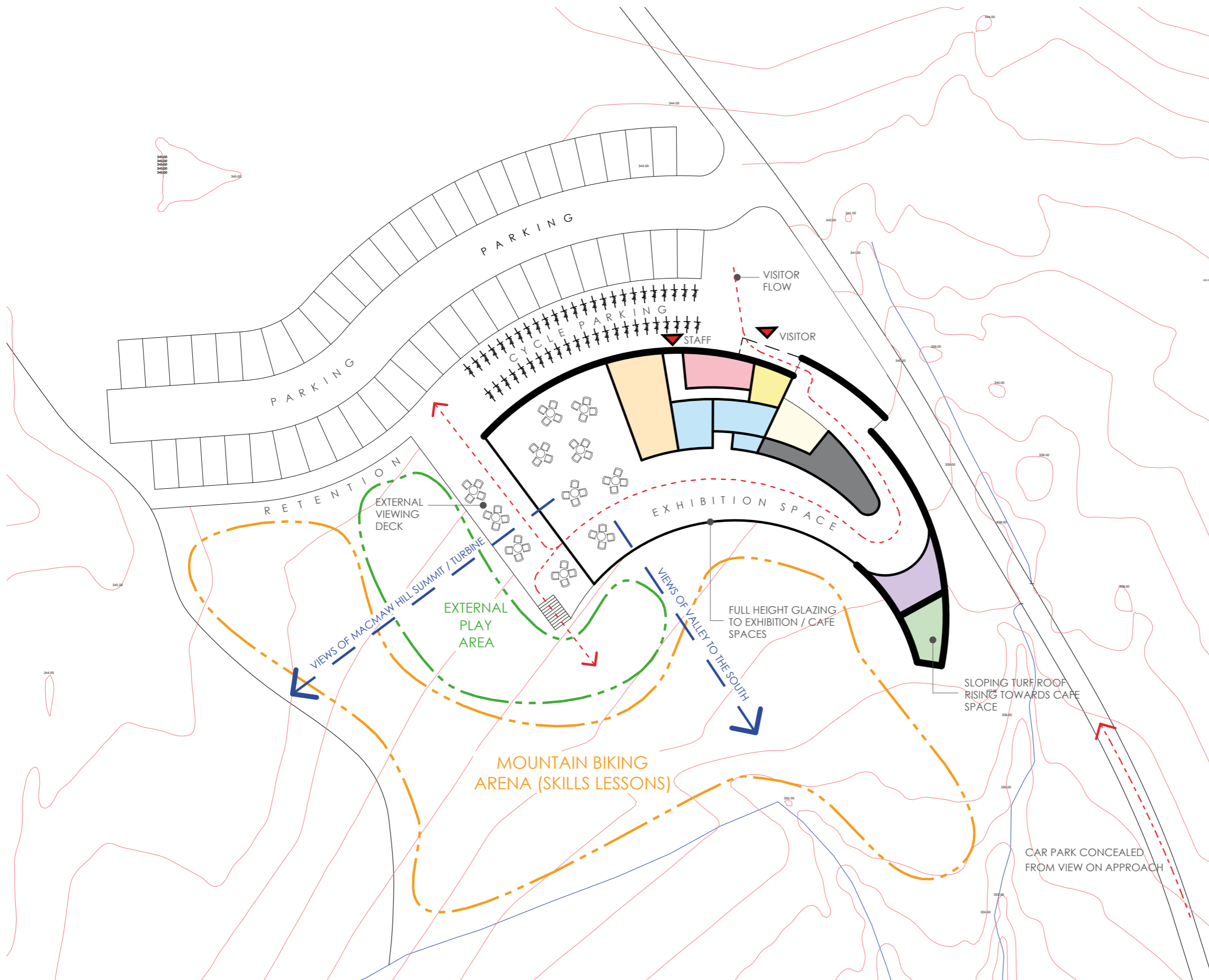
CWL will consult with all relevant stakeholders in order to establish if there is both an appetite for the Visitor Centre and a mutually beneficial design and specification for a Visitor Centre. After this consultation, CWL would conduct a feasibility assessment and survey to assess the viability of such an asset.

Ultimately any decision regarding the design and functionality of a Visitor Centre would be made in partnership with neighbouring communities and delivered via a separate, standalone planning application which is determined on its own merits.

200,000

people visit Whitelee Wind Farm Visitor Centre per year for recreational activities





- RECEPTION
- MEETING
- VISITOR WC'S
- ☼ CAFE
- KITCHEN / SERVERY
- STAFF
- OFFICE
- STORAGE

INDICATIVE SITE LAYOUT OF VISITOR CENTRE

## CONCLUSION

Across all of its wind farm developments, CWL looks to positively invest in, and become a part of, the local host communities for the lifetime of the projects.

Scoop Hill Community Wind Farm will generate significant investment and deliver huge benefits to local communities and the wider Dumfries & Galloway region.

If positively supported and planning consent is approved, CWL is wholly committed to investing in and working with the local host communities to deliver a beneficial legacy for generations to come. This legacy takes the form of:

- A Community Benefit fund of £20 million;
- The creation of over 250 temporary jobs across the construction and supply industry;
- Establishing at least 11 permanent jobs during the 40-year operational life of the wind farm;
- Creation of apprenticeships and work placements for local people and students on local college courses;
- Provision of diverse business opportunities and contracts to Scottish civil, electrical and manufacturing companies, which influences economic growth in Scotland;
- Support and funding to local Schools and colleges;
- An overall investment of £1.8 billion.

In addition to the above benefits, Scoop Hill Community Wind Farm also brings with it a unique opportunity to create a long-term tourism asset in the form of a 'Visitor Centre' and 'Multi Use Wind Farm Walk'. A new attraction such as this will offer further local employment and business opportunities, attracting inward investment that can act as a catalyst for economic growth.

The advent of COVID-19 now dictates that a renewed focus on establishing a robust economy matters more than ever and a 'green' recovery is imperative. CWL are committed to working in partnership with our host communities so that the wind farm will provide a long term, economic stimulus to Dumfries and Galloway and beyond.



**250+**  
jobs generated

CWL has provided  
**£5m**  
of community benefit  
across their wind farms

**£1.8bn**  
of investment

**£20M**  
of community  
benefits

Increased  
tourism &  
business  
growth

**200,000**  
people visit Whitelee  
Wind Farm Visitor  
Centre per year



COMMITMENT TO  
EDUCATION



## EDUCATION AND TRAINING

A key ethos for CWL is the education and training of local people to provide them with knowledge and skills for the future. This in turn assists them with seeking employment and improving the socio-economic levels of the local area.

Through the 'Buy Scottish' policy and working partnerships with a variety of companies and organisations, CWL will commit to supporting education and training resource requirements for residents of the local host communities for the lifetime of the wind farm.



## WORKING PARTNERSHIPS WITH LOCAL SCHOOLS

### Primary and Secondary Schools

CWL has a Memorandum of Understanding (MoU) with many primary schools located in the host communities surrounding its operational wind farms across Scotland. The MoU confirms CWL's commitment to working with these schools for the lifetime of the wind farm by providing the following:

- Educational support to the school concentrating mainly on environmental topics and energy awareness;
- Financial support for educational trips and visits for the school to attend and participate in.

An example of the benefits of these MoUs, is provided here.

In March 2018, Sanquhar Primary School held a Gardening Day, where they provided with staff, equipment and funding provided to help the teachers and pupils to create and manage their school garden. CWL assisted in building a wildlife garden for the school grounds, planting flowers and vegetables, as well as building a willow dome, a bug hotel and the installation of composting bins.

CWL also deliver educational presentations to schools, based on topics such as renewable energy, energy awareness and sustainability, and is keen to support local schools who are trying to achieve Eco School Status and therefore be more environmentally friendly.

With regards to Scoop Hill Community Wind Farm, CWL has already engaged with several of the local primary schools in Moffat, Lockerbie and Boreland providing educational workshops and presentations, trips to a wind farm and funding for IT equipment. Looking to the future, CWL wishes to engage even further with the local schools to create strong working partnerships and MoUs and bring the educational benefits to a wider region.

In January 2020, CWL signed an MoU with the Engineering Development Trust (EDT). Through this, CWL has agreed to provide support, both educationally and financially to the EDT. Specifically, CWL is to provide financial support for the funding of programmes coordinated by EDT, and educational support in the form of participating in EDT coordinated programmes such as the Go4SET.

The Go4SET project is typically ten weeks long and offers young people in S1/S2 the opportunity to develop skills, inform subject choice and change perceptions about Science, Technology Engineering and Maths (STEM), raising awareness of how studying these subjects can lead to a rewarding career.

Through the Go4SET, CWL employees also assisted those involved with their projects and offered advice about wind energy and renewable energy as a whole.



## COLLEGES

In conjunction with the company's operational wind farms in North Ayrshire, a long-term partnership has been established with West College Scotland and Ayrshire College that offers engineering students a two-week work placement with CWL, designed to teach both the 'Project' and 'Technical' aspects of the business and its portfolio of wind farms.

The work placements are designed for students on engineering/electrical engineering courses who wish to pursue careers within the renewable energy industry. The placements cover different areas of the business, including working with live data from operational wind farms and project development such as wind farm site design and constraints assessments.

Following the success of this partnership, CWL is seeking to establish a similar working partnership with Dumfries and Galloway College in Dumfries, in association with the proposed Scoop Hill Community Wind Farm. Dialogue is already underway with representatives at the college to discuss the potential opportunities for educational and employability presentations at its campuses.



## EDUCATIONAL PRESENTATIONS

Educational presentations are provided to schools and colleges; however, they are also available for other groups and organisations. For instance, after school clubs, youth groups, local adult groups and any other community groups as desired by group leaders and members such as the Scottish Women's Institute and Scouts.

Topics for the presentations can be on any subject related to the environment and are not limited to wind energy, but can include all types of renewable energy sources, energy efficiency, climate change, recycling, the environment, sustainability and energy awareness.

CWL also offers career-related presentations, such as those delivered to students of Lockerbie Academy and Moffat Academy in September 2019 and Dumfries Academy in February 2020. This was in association with Developing the Young Workforce Dumfries and Galloway (DYWDG), a Government-endorsed educational organisation.

Justin Thomas, Programme Manager at DYWDG said that;

***“CWL continues to build on its success, taking advantage of technological advances to ensure a continuous, sustainable industry for the future and will do so for Scoop Hill Community Wind Farm.”***

Following on from a careers presentation at Wallacehall Academy, a student from the Academy spent a day's work experience in December 2018 at CWL's Dalry and Millour Hill Community Wind Farms with the Operations Director, learning about the working of a wind farm and more about the onshore wind industry. The hope is that the visit will aid the pupil in making a decision about their future career choices and employment and CWL are looking at expanding the visits out to other students.

## EDUCATIONAL WIND FARM SITE VISITS

CWL likes to provide guided site visits of our operational wind farms, which enable the wind farm and its surrounding environments and habitats to be used as a teaching resource for pupils of all ages and abilities, and for adult groups who want to learn more about wind farms and renewable energy in general.

Site visits to various wind farms owned and operated by CWL have been given to groups of school pupils, community groups, students from universities and a group from the 19th Overseas Electricity Power Enterprise Study Tour. Once operational, CWL will promote site visits to Scoop Hill Community Wind Farm with preference given to schools, colleges and local groups from the host communities.

In October 2019, Beattock Primary School, classes P1 to P7, visited an operational wind farm at Sanquhar. Pupils first met at Sanquhar Town Hall to partake in an interactive workshop on climate change, the greenhouse effect, renewable energy and wind power. After this the students were taken to the wind farm and given an informative tour by CWL staff.



## COMMUNITY ASSETS – CASE STUDIES

Funding from CWL's seven operational wind farms has already contributed to the development of some outstanding community assets within local host communities. Information on these community projects is provided in the following pages, demonstrating that by working together, local host communities can substantially benefit from the development and operation of a wind farm in their area and provide facilities and services of great benefit to all, which they may otherwise have not been able to achieve.



## COVID-19 (CORONAVIRUS) AID

During the COVID-19 outbreak and subsequent Government restrictions in March 2020, CWL announced a series of support initiatives, including two new funds to directly support health and charitable organisations in East Lothian and North Ayrshire.

By April 2020, the funds had already been used to provide medical services with £6,000 of essential equipment via a community council crisis project, £4,000 worth of food per month to a foodbank and £5,000 of emergency support to individuals.

CWL also set aside £255,000 of financial support across the areas around its seven operational wind farms. This financial support came from both money diverted from wind farm community benefit funds and directly from CWL.

Diane Wood, Community Benefits Director at Community Windpower, recently said:

**“We quickly realised from speaking to our local communities and organisations that wider help was urgently required as a result of the COVID-19 outbreak. That’s why we have now created these official funds in East Lothian and North Ayrshire, alongside financial support to organisations we have ongoing partnerships with. The East Lothian fund, through our BeGreen Dunbar centre and the community councils in Abbey St Bathans, Preston and Boynel, Lammermuirs, East Lammermuir, Dunbar and Cockburnspath and Cove, is now open to applications from registered organisations, and we’re looking at providing decisions on all applications within 48 hours. We’ve done this to ensure the money we provide reaches those who need it most and quickly.”**



## COVID-19 FUNDING FOR NORTH AYRSHIRE FOODBANK



As part of the £255,000 Covid-19 crisis fund, CWL provided the North Ayrshire Foodbank with £1,000 of meat a week to help provide up to 2,500 meals a week, through the Dalry Parish Boundary Trust. These meals were then distributed to vulnerable people and families during the Covid-19 outbreak.

Craig Crosthwaite, North Ayrshire Foodbank's coordinator, based in Ardrossan's Church of Nazarene said:

**“I’m overwhelmed at how the community has come together at this critical time to help those who are in most need of our support. The generous donation of meat will be invaluable to help us make healthy, nutritious and warm meals including curries, pasta dishes and stews, alongside vegetarian options.”**

**“The donations we’re receiving from the likes of Community Windpower and the Dalry Parish Boundary Trust, local supermarkets and other food outlets clearly demonstrate what a fantastic community spirit we have here, and we know this will continue beyond the end of this terrible situation.”**

## COVID-19 FUNDING FOR BLOOD BIKES SCOTLAND

Through Community Windpower's joint Covid-19 crisis fund with BeGreen Dunbar, various NHS units have been helped including the Belhaven Community Hospital and Edinburgh Children's Hospital Charity.

An additional £3,500 grant was also donated to Blood Bikes Scotland due to a significant increase in demand for its services from the NHS in recent months.

Blood Bikes Scotland is self-funded, and its income is solely generated by fundraising and grants, with the former suspended due to Covid-19 restrictions.

The charity operates a fleet of 12 bikes and one car, supporting four NHS authorities – Lothians, Borders, Forth Valley and Fife.

Its service to the NHS is completely free and saves the NHS from costs on taxis and couriers, as Blood Bikes Scotland carries blood and urine samples, equipment and various documents, all vital to the smooth running of the NHS authorities.

John Baxter, chairman of Blood Bikes Scotland, said:

**“As a result of Covid-19 the demand for our service by the NHS has increased by almost 70% from March to April. Our fundraising activities have been suspended but we need income more than ever now to cover the additional service for the NHS, which is why we applied to the Covid-19 crisis fund run by Community Windpower and BeGreen Dunbar. We’re really grateful for the support from them, to help keep our bikes and car on the road to service the NHS.”**



## NORTH AYRSHIRE GIRL GUIDES – ACTIVITY CENTRE

Utilising funding from Millour Hill Community Wind Farm, CWL provided a £100,000 direct donation to Girlguiding Ayrshire North for the construction of their brand new Blair Activity Centre. The Guides can be seen at the opening of their new building in the top photo.

An additional £15,000 was granted by the Dalry Parish Boundary Trust, the distributors of community benefit funding from Millour Hill Community Wind Farms, towards the supply and installation of a new kitchen in the Blair Activity Centre.

True to CWL's 'Buy Scottish' policy, this project employed local architect James Harper from Lochwinnoch, and the appointed builders were Bridge of Weir contractors, H McMurray and Son.

The Blair Activity Centre will provide a space for social activities and educational experiences for the Girl Guides, not just from North Ayrshire but across Scotland. The activity centre will be used by young people for generations to come and will be an invaluable asset for communities in Dalry, North Ayrshire and beyond.

Betty Wilson, Guide Leader for the North Ayrshire Guides, shared her appreciation at the official opening on Saturday 18th August 2018:

***“Community Windpower’s donations and input should not be underestimated. Without them this would not have happened... North Ayrshire Guides can’t thank the Community Windpower team and members of the Trust enough.”***



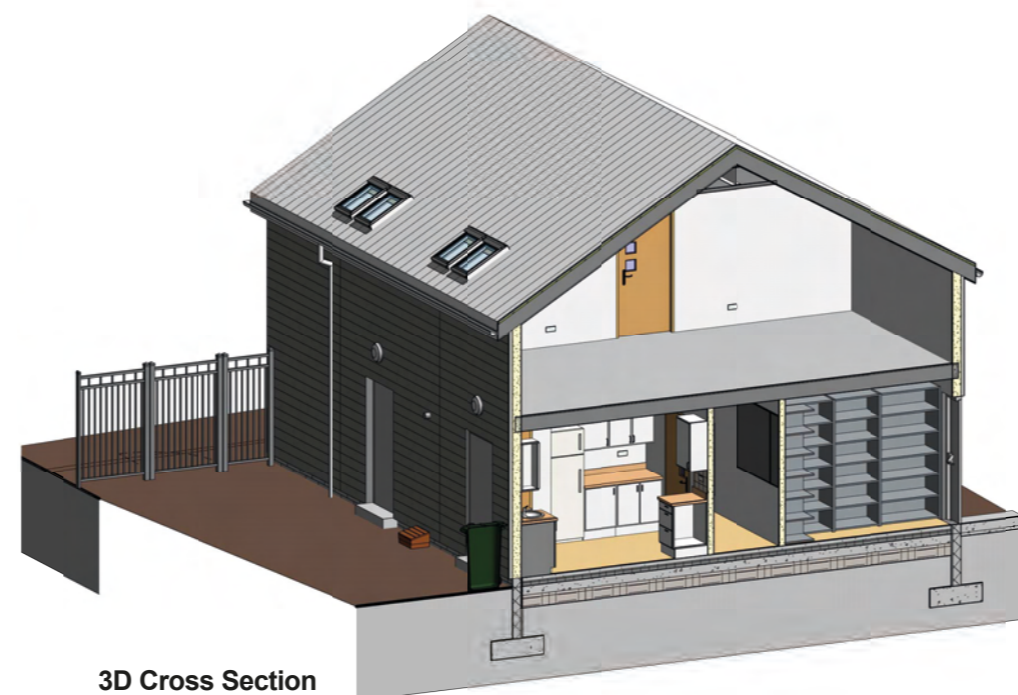
## 55TH DALRY SCOUT GROUP – SCOUT HALL

Millour Hill Community Wind Farm also pledged £100,000 towards the demolition, redesign and rebuilding of Dalry Scout Hall for the 55th Dalry Scout Group which disbanded due to the dilapidated state of the old Scout Hut. The group has successfully reformed with an overwhelming number of local children attending the Beaver, Cub and Scout groups. A £20,000 grant was also provided by the Dalry Parish Boundary Trust to assist with the development.

The Scout Hall construction works are nearing completion and, once fully finished, will provide a fantastic space for present and future Dalry Scouts to enjoy, as well as providing a vital community space. Local North Ayrshire company J&S Builders were appointed to build the Scout Hall, in keeping with our commitment to 'Buy Scottish', retaining jobs and investment within the Dalry area.

55th Dalry Group Scout Leader, Steven Horswell, has complimented the role CWL have played in making this project a reality:

***“None of this would have been possible without the huge financial donation and on-going support from everyone at Community Windpower. They have all been very supportive and helpful and we thank them for that.”***



3D Cross Section



## BEATTOCK PRIMARY IPAD DONATION

Through a pre-development community benefit donation, CWL and Scoop Hill Community Wind Farm have been able to help children at Beattock Primary School and Nursery get improved access to electronic, online learning through the purchase and delivery of ten brand new iPads. The additional iPads will enable the pupils to make the most of digital technology and education.

Hazel Graham, acting depute at Beattock Primary School, said:

*“We’re not a big school with huge resources, but we have children who are always eager to learn and need technology to help them progress. When Community Windpower became aware of the situation and offered us a solution, the school and parent council were absolutely delighted. The new iPads will make a huge difference to the school and help the children reach their potential by using the educational programmes made available through Dumfries and Galloway Council.”*



## UPPER NITHSDALE COMMUNITY TRUST

As part of the community benefits fund for the operational Sanquhar Community Wind Farm, CWL are contributing £150,000 a year to the local host communities of Kirkconnel and Kelloholm and Sanquhar which will equate to £3.75 million for the 25-year lifetime of the wind farm. To ensure the funding is administered correctly and fairly between the host communities, the Upper Nithsdale Community Trust was set up.

The Upper Nithsdale Community Trust will be responsible for administering and distributing funding to community groups, organisations and individuals who have completed grant application

forms and associated paperwork and comply with the grant criteria.

Since Sanquhar Community Wind Farm became operational in 2018 CWL has donated approximately £288,700 to the Upper Nithsdale Community Trust.

Amongst the donations made in 2019 was £29,000 to Sanquhar Community Council for play equipment at Lorimer Park, £14,800 to the Kirkconnel & Kelloholm Development Trust for equipment for an inclusive playpark & pathways and £1,880 to the Mid & Upper Nithsdale Twirlers to purchase new tracksuits for the squad.



# COMMUNITY FUNDING FOR LOCAL SERVICES AND EVENTS

## ANZAC DAY

In April 2019, CWL held a memorial service in honour of two Royal New Zealand Air Force service men, who sadly lost their lives at Middle Mornut, near Dunbar in 1945; Pilot, Flying Officer, Harry Kenneth Lillington Rice and Navigator, Flying Officer, Aubrey John Clarke. The memorial service coincided with ANZAC day, a Day of remembrance for Australians and New Zealanders to pay respects to those who died in service and those who are currently serving.

Family of both aircraft men, serving members of the British and New Zealand RAF, friends and local members of the community as well as the CWL team attended the service and the unveiling of the memorial stone that has been installed at Aikengall II Wind Farm as a permanent memorial.



# NORTH AYRSHIRE FOOD BANK

CWL has supported the North Ayrshire Foodbank since 2014, with the donation of festive food hampers each Christmas, plus other donations, totalling over £80,000 in financial support for the charity.

As part of this, CWL is a Patron of the foodbank which provides them with a long-term commitment and support for the future. This, in turn, helps the project coordinator, Craig Crosthwaite, and his team of volunteers not only with their daily work, but provides security and stability for the vital service they provide to vulnerable people and families living in North Ayrshire.

Craig Crosthwaite, North Ayrshire Foodbank coordinator stated:

***“The donation and support from Community Windpower Limited will help ensure the Foodbank succeeds in its mission of reducing hunger for those in crisis. This is particularly important when 1 in 4 children in Scotland currently go to bed hungry.”***

More recently, in December 2019, £15,000 was donated by CWL to locally purchase items for festive food parcels, which were delivered to more than 250 struggling families across North Ayrshire. Thirty volunteers including CWL and BeGreen Dalry employees assisted in preparing and packing the food parcels to be distributed.

In addition to this, more donations were made to the charity as part of Community Windpower’s Covid-19 emergency fund, as previously detailed on page 21.



# EDINBURGH SCIENCE FAIR CAREER HIVE SPONSORSHIP

In February 2020, CWL was proud sponsors of Edinburgh Science Fair's Careers Hive, which is aimed at 13 to 15-year-old students to help them understand career opportunities of the future.

The event took place at the National Museum Scotland in Edinburgh and was held over six days to ensure the 1,500 students who attended could have time and space to explore all the displays.

Our sponsorship was centred around a Sandbox AR (Augmented Reality) exhibit, which allowed the students to create different geographical environments, and then look at how a wind farm could be located on it. It was a great hands-on experience for students to learn more about visuals and surroundings for various projects.

Diane Wood, Community Benefits Director at Community Windpower, said:

***“It was great to hear feedback from the students who attended, as it was generally overwhelmingly positive. They had a fantastic day and felt that the event was very well put together and a real insight into various careers in a whole host of industries. We’ll continue our support for educational facilities and charities and look forward to this event next year.”***

CWL is working with the Science Fair to establish a longer-term partnership to support students in the wider region.



## REFERENCES

Dumfries and Galloway Council. 2018. Dumfries and Galloway Local Housing Strategy 2018-23.

Dumfries and Galloway Council. 2020. Council budget 2020/21. [Accessed 2 June 2020]

Eskdalemuir Community Council. 2013. Upper Eskdale Development Group Business Plan and 5 Year Trading Forecast. [Accessed 11 May 2020];

Johnstonebridge Community Council. 2019. Johnstonebridge Community Action Plan. [Accessed 11 May 2020];

Moffat and District Community Council and Kirkpatrick Juxta Community Council. 2016. Moffat and Beattock Community Action Plan. [Accessed 11 May 2020];

North Milk Community Council. 2019. North Milk Community Council Minutes. [ONLINE] [Accessed 11 May 2020];

Scottish Renewables. 2016. Whitelee Visitor Centre. [ONLINE] [Accessed 27 May 2020];

Scottish Government. 2018. Climate Change Plan: third report on proposals and policies 2018-2032 (RPP3). [ONLINE] [Accessed 27 May 2020];

Zap Map. 2020. Map of charging points in the UK. [ONLINE] [Accessed 4 June 2020].

## Community Windpower Ltd

Godscroft lane  
Frodsham  
Cheshire  
WA6 6XU

Tel: +44 (0)1928 734544  
Fax: +44 (0)1928 734790

[communitywindpower.co.uk](http://communitywindpower.co.uk)  
[scoophillwindfarm.co.uk](http://scoophillwindfarm.co.uk)

